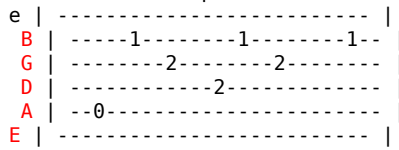


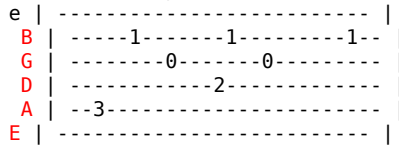
Adele - Now And Then

Tom: G

Substitua Am para:



Substitua C para:



Intro: Am C Am C

Am C Am C
Sometimes the hole you left hurts my heart
Am C Am C
So bad it cuts through the deepest parts of me
Am C Am C
And fills up my mouth with the words that cry
Am C Am C
How I'm still trying to stay inside

C C

Am C
Hearts break and hands wave
Am C
To make us grow fonder
Am C
Then our eyes cry and souls sigh
Am C
So that we know that it hurts

Am C
Hearts break and hands wave
Am C
To make us grow fonder
Am C
Then our eyes cry and souls sigh

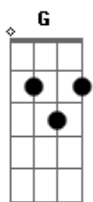
Am C
So that we know that it hurts
C C Am C Am C
Am C Am C
Every now and then my memories ache
Am C Am C
With the empty ideas of the ones we'd made
Am C
But as time goes on and my age gets older
Am C
I love the ones I know, they're enough to picture the rest
C

Am C
'Cause hearts break and hands wave
Am C
To make us grow fonder
Am C
Then our eyes cry and souls sigh
Am C
So that we know that it hurts

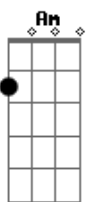
Am C
Our hearts break and hands wave
Am C
To make us grow fonder
Am C
Then our eyes cry and souls sigh
Am C
So that we know that it hurts

C C
Am C Am C
You know when to make me imagine you're here
Am C Am C
You know when to make me imagine you're here
Am C Am C
You know when to make me imagine you're here
Am C Am C
You know when to make me imagine you're here
C C

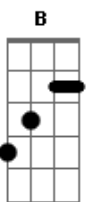
Acordes



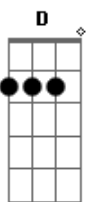
© ukulele-chords.com



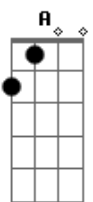
© ukulele-chords.com



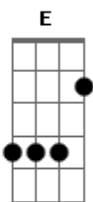
© ukulele-chords.com



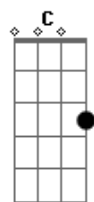
© ukulele-chords.com



© ukulele-chords.com



© ukulele-chords.com



© ukulele-chords.com