

Aerosmith - Rats In The Cellar

Tom: **D**
Intro: -

rhythm:
A - B **A - B** **A - B**

lead:

A - B (start main riff)

main riff-

E Db A Gb B
New York Ci-ty blues
East side West side news
Throw me in the slam
E Db A Gb B

Catch me if you can **Db**

(**Ab**) **D**(maybe another C#, I can't really tell)
be - lieve

(**Ab**) **Db** **B**
that you're wear - in'

Db B Db B A Em
tear-in me a - par - t

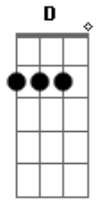
Db D B A Em

some tab and chords for rhythm guitar in outro-

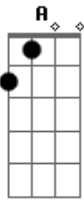
Db Bm
trill (etc...)

continue with similar pattern until:
Ab B Db

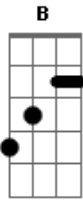
Acordes



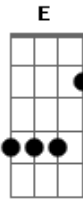
© ukulele-chords.com



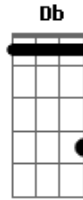
© ukulele-chords.com



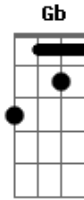
© ukulele-chords.com



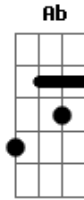
© ukulele-chords.com



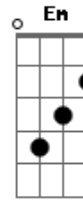
© ukulele-chords.com



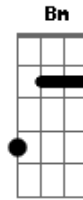
© ukulele-chords.com



© ukulele-chords.com



© ukulele-chords.com



© ukulele-chords.com