

Aidan Gallagher - She

tom:

Dm

She is a dream that teases my mind

Dm Bb Gm A

Guess I'm waiting for someone to come along with her eyes

Dm Bb Gm A

Yet every time I try and find her

Gm A

A part of me dies

Dm Bb Gm A

Feel so deeply in love with her, the thought of her and I

Dm Bb Gm A

She, is a nightmare of mine

Dm Bb Gm A

She haunts me in moments like the middle of the night

Dm Bb Gm A

She hides in the corners of a vulnerable mind

Dm Bb

She seeks is unknown

Gm A

And she's very hard to find

Dm Bb Gm A

She, siren of love

Dm Bb Gm A

You can't see what she is, until you're up to close

Dm Bb Gm A

And by the time you cut it off and say enough is enough

Dm Bb

She reels you back in

Gm A

My heart is so temped by

Dm Bb Gm A

Love, love, love, love

Dm Bb Gm

By love, love, love

A Dm Bb Gm A

Love, by love

Dm Bb Gm A

And he is a weakness of mine

Dm Bb Gm A

His heart seems to fall for a love he'll never find

Dm Bb

And by the time he finds a lover

Gm A

His lover who will die

Dm Bb Gm A

He will hate himself for years, for the tears left in his eyes

Dm Bb Gm A

I hate him for the tears that I find in my eyes

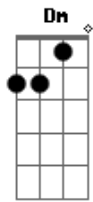
Dm Bb

And I'll hate him for finding her

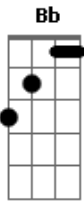
Gm A Dm

And tossing her aside

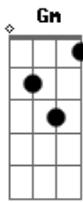
Acordes



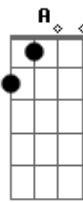
© ukulele-chords.com



© ukulele-chords.com



© ukulele-chords.com



© ukulele-chords.com