

Alanis Morissette - Mary Jane

Tom: **G**

TAB

D **D** **D**

D = **D**

D **D** **D** **D**
What's the matter Mary Jane, you had a hard day
D **D** **D** **D**
As you place the don't disturb sign on the door
D **D** **D** **D**
You lost your place in line again, what a pi - ty
D **D** **D** **D**
You never seem to want to dance anymore

C **G** **D**
It's a long way down
Bb **F** **D**
On this roller coaster
C **G** **Gm** **D**
The last chance streetcar
Em
Went off the track
A **A**
And you're on it

I hear you're counting sheep again Mary Jane
What's the point of tryin' to dream anymore
I hear you're losing weight again Mary Jane
Do you ever wonder who you're losing it for

Well it's full speed baby
In the wrong direction
There's a few more bruises
If that's the way
You insist on heading

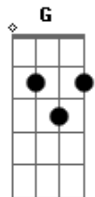
Please be honest Mary Jane
Are you happy
Please don't censor your tears

You're the sweet crusader
And you're on your way
You're the last great innocent
And that's why I love you

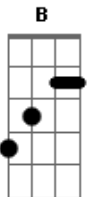
So take this moment Mary Jane and be selfish
Worry not about the cars that go by
All that matters Mary Jane is your freedom
Keep warm my dear, keep dry

Tell me
Tell me
What's the matter Mary Jane...

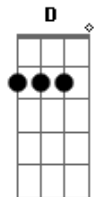
Acordes



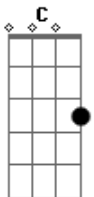
© ukulele-chords.com



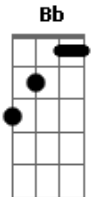
© ukulele-chords.com



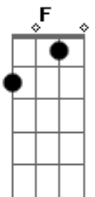
© ukulele-chords.com



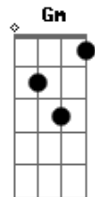
© ukulele-chords.com



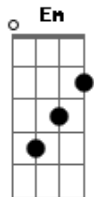
© ukulele-chords.com



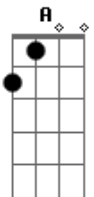
© ukulele-chords.com



© ukulele-chords.com



© ukulele-chords.com



© ukulele-chords.com