

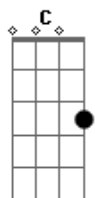
Andy Gibb - I Can't Help It

Tom: C

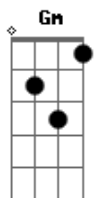
C Gm C F
Oh, I
F
Baby, what a fool I am
First a boy and then a man am I
And you
Bb
You're the heart of it all
You're the things I say and do
Am Dm
Am I wasting my time hanging around
You would be gone
Gm
But I can't help it
C
Every moment that I think about you
C Gm
Every day and every night without you
F
I can't survive
Dm Am
Love, take away the lonely days gone by
Gm
Make it every day for you and I
Giving me a chance to go on believing
C
Girl, you gotta go on believing
Am Dm G
Boy, you gotta go on believing

C
You
F
Baby you're the breath I take
C Am
Coming from the heart in love am I
Em
And you
F
You're the heart of it all
G C Am
You're the things I say and do
Em Am Dm
Am I wasting my time hanging around
G
You would be gone
F
But I can't help it
G
Every moment that I think about you
F
Every day and every night without you
C
I can't survive
Am Em
Love, take away the lonely days gone by
Dm
Make it every day for you and I
G
F
Giving me a chance to go on believing
Am Bm
Girl, you gotta go on believing
(Gbm Em F Am Em Dm G F Dm G)

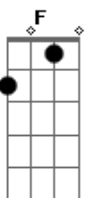
Acordes



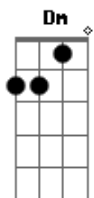
© ukulele-chords.com



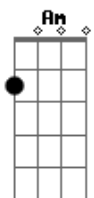
© ukulele-chords.com



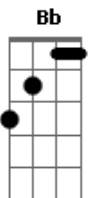
© ukulele-chords.com



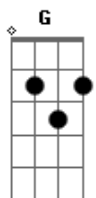
© ukulele-chords.com



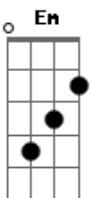
© ukulele-chords.com



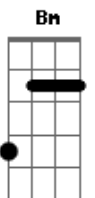
© ukulele-chords.com



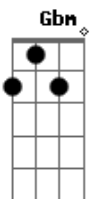
© ukulele-chords.com



© ukulele-chords.com



© ukulele-chords.com



© ukulele-chords.com