

# Angra - Cycles Of Pain

tom:

Intro: Bm Dm  
Bb Gm Dm Am

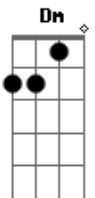
Bm  
You wake up alone again  
Bm  
It's hard to get out of bed  
Dm  
Your mind is blank  
Dm  
Your heart is black  
Bm  
All these fears that you can't explain  
Bm  
When nothing seems to make sense  
Dm  
A shallow grave you're buried in

Bb Gm  
Everything goes wrong and you're lonely  
Dm  
Try to control  
Dm  
Put up a fight  
Am  
Lying helpless in the dark  
Bb Gm  
Everything goes wrong and you're desperate  
Dm  
Taking a life  
Dm  
Won't make it right  
Dm  
Hide your tears

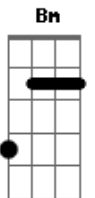
Bm  
The battle of everyday  
Bm  
Pretend it's all gone away  
Dm  
The agony of broken dreams  
Bm  
The hours are all the same  
Bm  
And misery wants to stay  
Dm  
Tortures me, burn and cry

Bb Gm  
Everything goes wrong and you're lonely  
Dm  
Just try to control

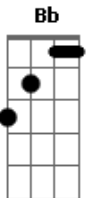
## Acordes



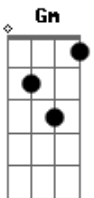
© ukulele-chords.com



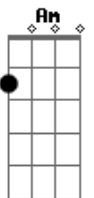
© ukulele-chords.com



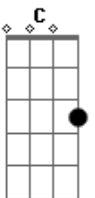
© ukulele-chords.com



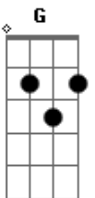
© ukulele-chords.com



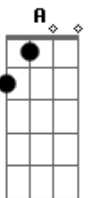
© ukulele-chords.com



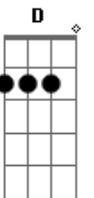
© ukulele-chords.com



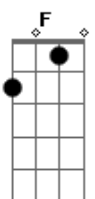
© ukulele-chords.com



© ukulele-chords.com



© ukulele-chords.com



© ukulele-chords.com

Dm  
Put up a fight  
Am  
It's so hard for everyone  
Bb Gm  
Everything goes wrong and you're desperate  
Dm  
Avoiding yourself  
C  
Taking the blame  
G  
Here it comes again

C Gm Dm C  
Cycles of pain, burning my heart  
C Gm Dm C  
Screaming in rage won't tear it apart  
A Dm C Bb  
Cycles of pain, burning my heart  
A Bb A  
Lost in the dark

[Solo] Bb Gm Dm C G  
Bb Gm Dm G A

D  
When there is no ground, I fall so deep  
G D  
All the angels sing a song but I can't hear  
Bb F G  
Stand up, be strong now, be brave for me

A Gm Dm C  
Oh, cycles of pain, burning my heart  
C Gm Dm C  
Screaming in rage won't tear it apart  
A Dm C Bb  
Walking alone, lost in the dark  
C Gm Dm C  
Cycles of pain, helpless despair  
C Gm Dm C  
Try to escape from all that is there  
A Dm C Bb  
Cycles of pain, burning my heart  
C Bb  
Burning my heart  
C D Bb C D  
But I will survive

D Bb C D  
I will survive  
Bb C F  
I was lost and lonely  
Bb G  
But I know I will survive