

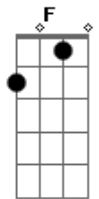
# ANIE - Suicide Letter

Tom: F

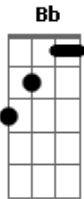
There was a girl In the shell Forcing to hide  
 There was a boy In the shell That fight every day for his life  
 Just a kind of playing, the same mistakes rise from their minds  
 Just a shame day fight invade  
 Tired of their selves and jump in the lack of light  
 I just felt like Staying here forever  
 Take a breath and then Hide here forever  
 ( Bb Dm C )  
 It?s not a phase It?s not in me  
 That?s who I am  
 Forcing fear Disrespect  
 Love never came in the past  
 Empty promises faithless Searching the meaning of life

Next to the edge with the weight  
 The pressure of friends right to your face  
 I just felt like Staying here forever  
 Take a breath and then Hide here forever  
 How I do  
 What to change  
 I am more than this pressure in me  
 It will take  
 a hard way but I still fight now  
 It?s a new day I am out of this terror  
 Take a breath and jump out forever  
 Now I know  
 More than this  
 I keep going as myself  
 I just feel like I?m out of this forever

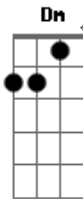
## Acordes



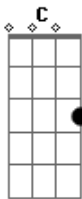
© ukulele-chords.com



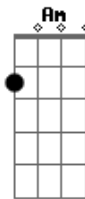
© ukulele-chords.com



© ukulele-chords.com



© ukulele-chords.com



© ukulele-chords.com