

Arctic Monkeys - I Bet That You Look Good On The Dancefloor

Tom: **A**

Intro: **Gb**

LEAD
over **Gb** chord

Chords change to: **Db B A Gbm**

fast run at the end i cnt work out, uses **Gb** mninor pentaonic scale
the notes.. **Gb A B Db E** in this position i think

VERSE

Db B A Gb Db B A Gb
stop makin th eyes at me il stop making the eyes at u...

continue with.. **Db B A Gb** untill

CHORUS

Gbm A
E

i bet tht u look good on th dancefloor i dont know if ur looking for romance,

Gbm
i dnt know wot ur looking for

Gb A
well i bet tht u look good on th dancefloor dancing to elctro
E Db
pop like a robot from 1984..from 1984

lead at end of Chorus..

VERSE

Db B A Gb

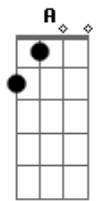
CHORUS

Gbm A E Gb Gbm A E Db

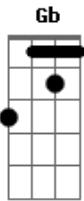
BRIDGE

A E F#

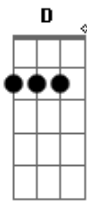
Acordes



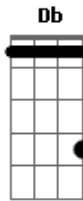
© ukulele-chords.com



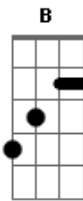
© ukulele-chords.com



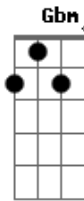
© ukulele-chords.com



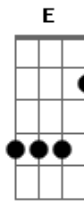
© ukulele-chords.com



© ukulele-chords.com



© ukulele-chords.com



© ukulele-chords.com