

Asking Alexandria - See What's On The Inside

tom:

Intro: Dm C Bb Gm A7
Dm C Bb Gm A7

Dm C
I've never wanted to be

Bb
What you want me to be

Gm A7
It's like I've lost myself in finding my way

Dm C
I feel it creeping in

Bb
Patience is wearing thin

Gm A7
If I could help myself I would

Bb
But there's a part of me that roams

Gm A7 Dm
That belongs to the road and begs me to run

Dm C
To runaway from the world

Bb
To leave it all behind

F C
To strip it away and see what's on the inside

Dm C
So I'm facing my fears

Bb
And taking my time

F C
To strip it away and see what's on the inside

(Dm C Bb Gm A7)

Dm C
I've always tried to be

Bb
What you needed from me

Gm A7
And along the way forgot who I am

Dm C
I'm sorry for getting cold

Bb
For pushing you away

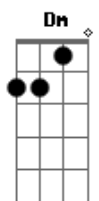
Gm A7
It just feels like I'm falling and nobody's there

Bb
But there's a part of me that roams

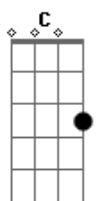
Gm A7 Dm
That belongs to the road and begs me to run

Dm C
To runaway from the world

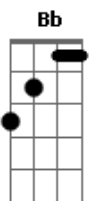
Acordes



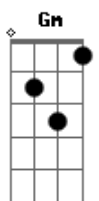
© ukulele-chords.com



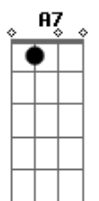
© ukulele-chords.com



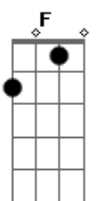
© ukulele-chords.com



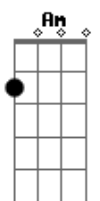
© ukulele-chords.com



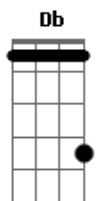
© ukulele-chords.com



© ukulele-chords.com



© ukulele-chords.com



© ukulele-chords.com

Bb
To leave it all behind

F C
To strip it away and see what's on the inside

Dm C
So I'm facing my fears

Bb
And taking my time

F C
To strip it away and see what's on the inside

[Solo] Bb C F C
Dm Am Bb

Bb C
To runaway from the world

F
To close my eyes and leap

C Dm Am
To take the road less travelled to the unknown Am

Bb C
To take the long way home

F
And be wrong sometimes

C Dm Am Bb Db
To be like the wind and find out what's on the inside

Dm C
Runaway from the world

Bb
And leave it all behind

F C Dm
Strip it away and see what's on the inside

Dm C
To runaway from the world

Bb
To leave it all behind

F C
To strip it away and see what's on the inside

Dm C
So I'm facing my fears

Bb
And taking my time

F C
To strip it away and see what's on the inside

Dm F C
Runaway from the world

Bb F C Dm
(Runaway from the world) Leave it all behind

F C
(Runaway from the world) Runaway from the world

Bb F C Dm
(Runaway from the world) Leave it all behind