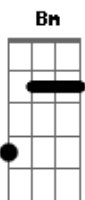


Beeshop - The Damage

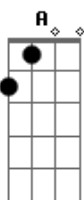
tom:
 I know art is hard
 I knew it from the start
 It goes with you
 Wherever you will go
 It sticks in you
 Wherever you will go
 Take what you need
 Take your dreams and plant a seed
 And take it with you
 Wherever you will go
 And you sing the blues
 Wherever you will go
 Sometimes it's hard
 To believe you when you say 'I love you'
 We tried to stop
 I was leaving when I said 'I love you'
 Take what you need
 Take your dreams and plant a seed
 And take it with you

Wherever you will go
 When love is new
 It takes some time to grow
 Take your thoughts to yourself You
 Know there's anybody else
 Who can make me write this song
 Keep your words to a time
 When your heart is feeling fine
 I can hear your silent moan
 Sometimes it's hard
 To believe you when you say 'I love you'
 We tried to stop
 I was meaning when I said 'I love you'
 But I don't know
 I don't know
 The damage I've done
 I thought I wouldn't do it to
 Anyone
 Oh, the damage I've done
 I thought I wouldn't do it to anyone, oh

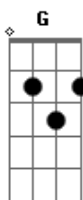
Acordes



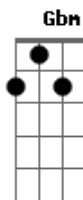
© ukulele-chords.com



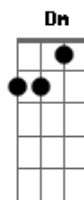
© ukulele-chords.com



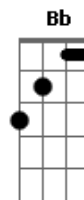
© ukulele-chords.com



© ukulele-chords.com



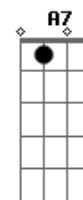
© ukulele-chords.com



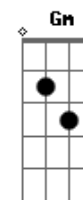
© ukulele-chords.com



© ukulele-chords.com



© ukulele-chords.com



© ukulele-chords.com