

# Ben Caplan - Down To The River

Tom: A

Intro: 1.

```
E|-----|-----|---x---|---x---|
B|-----|-----|---x---|---x---|
G|-----|-----|---x---|---x---|
D|-----|-----|---x---|---x---|
A|-1-1s3--|-1-1s3--|---x---|---x---|
E|-----|-----|---x---|---x---|
```

2. [Riff]

```
E|-3-----|-----|-----|-----|-----|-----|-----|
--|
B|---4-6--|-----|-----|-----|-----|-----|-----|
--|
G|-----|---3-5--|-----|-----|-----|-----|-----|-----|
--|
D|-----|-----|---3-5--|---3---|-----|-----|-----|-----|
--|
A|-----|-----|-----|---6-----|---3---|5s6s5--|---3---|
--|
E|-----|-----|-----|---6-----|-----|-----|-----|
--|
```

3. [Verso]

```
          Cm          Bb          Eb          F          G          Ab
E|---3---|---6---|---6---|---1---|---3---|---4---|
B|---4---|---6---|---8---|---1---|---3---|---4---|
G|---5---|---7---|---8---|---2---|---4---|---5---|
D|---5---|---8---|---8---|---3---|---5---|---6---|
A|---3---|---8---|---6---|---3---|---5---|---6---|
E|---x---|---6---|---x---|---1---|---3---|---4---|
```

I went down to the river

Flowing out unto the sea

On my way to the ocean

Let the spirit swallow me

Cm Bb  
I got low down in the water  
Eb F  
I let the current guide my bones  
Cm Bb  
I've got nine kinds of trouble  
F  
I'm just trying to find my way home

```
E|-3-----|-----|-----|-----|-----|-----|-----|
--|
B|---4-6--|-----|-----|-----|-----|-----|-----|
--|
G|-----|---3-5--|-----|-----|-----|-----|-----|-----|
--|
D|-----|-----|---3-5--|-----|-----|-----|-----|-----|
--|
A|-----|-----|-----|---3-6---|-----|s6-5s3-|---3---|
--|
E|-----|-----|-----|---3-6---|-----|---6---|
--|
```

Cm Bb  
Over twenty-some years of living  
Eb F  
and a thousand wasted days  
Cm Bb  
I have loved a lot of women

F  
Many times I've gone wrong ways

Cm Bb  
And I came down to the water

Eb F  
For a dip. To cleanse my soul.

Cm Bb  
They keep telling me that I'm just a babe

F  
But baby, why do I feel so old?  
( Cm Bb Eb F )

Cm F  
This is the verge of a breakthrough  
Eb G  
it's a fine line that cannot be bent

Cm F  
and I felt like I river run dry

Eb G  
but I don't know where all of the rainwater went

Cm F  
And I believed we were all dead or dying  
Eb G  
but I see different in the blue light  
Cm F  
there is no such thing as a dawn or a dusk  
Eb G  
it is daylight until it is night

Cm F  
You've got to fight through the dimming

Eb G  
You've got to run into the west

Cm F  
You've go to rage against the dying of the light  
Eb G  
Live for the moment that's left

Ab  
'Cause there is no such thing as a dying man  
Cm  
We're alive 'till the moment we're dead  
Ab  
and a drowning man is just a living man  
G  
Who hasn't run out of his last bit of breath

( G Cm Ab G )  
( Cm Bb Eb F )

Cm Bb  
I went down to the river  
Eb F  
flowing out unto the sea  
Cm Bb  
on my way to the ocean  
F  
let the spirit swallow me

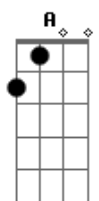
Cm Bb  
I got low down in the water

Eb F  
I let the current guide my bones

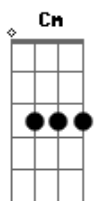
Cm Bb  
I've got nine kinds of trouble

F  
I'm just trying to find my way home

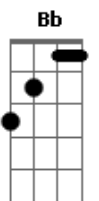
## Acordes



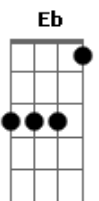
© ukulele-chords.com



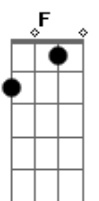
© ukulele-chords.com



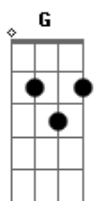
© ukulele-chords.com



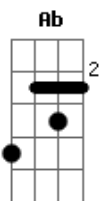
© ukulele-chords.com



© ukulele-chords.com



© ukulele-chords.com



© ukulele-chords.com