

Beseech - Devil's Plaything

tom:

Cm Ab
Love is a flame
Bb Cm
A devil's thing
Cm Ab
A violent storm
Bb Cm
About to be born

Cm Ab
Just look in these eyes
Bb Cm
See all the lies
Cm Ab
All the things you see
Bb Cm
You cannot deny

(Cm Ab Bb Cm)
(Cm Ab Bb Cm)
(Cm Ab Bb Cm)
(Cm Ab Bb Cm)

Cm Ab
And this flame
Bb Cm
That burns inside
Cm Ab
If you get too close
Bb Cm
Burn you alive
Cm Ab
Just look in these eyes
Bb Cm
And see if they lie
Cm Ab
All these words I speak
Bb Cm
You cannot deny

(Cm Ab Bb)

Cm Ab
Got a light
Bb Cm
Shines on me
Cm Ab
Gentle light
Bb Cm
It will never be

Cm Ab
See the flame
Bb Cm
In my hand
Cm Ab
If you're playing with fire
Bb Cm
You're playing in Hell

(Cm Ab Bb Cm)
(Cm Ab Bb Cm)
(Cm Ab Bb Cm)
(Cm Ab Bb Cm)

Cm Ab
Devil's plaything
Bb Cm
In my hands
Cm Ab
If you don't want pain
Bb Cm
You don't understand
Cm Ab

Got a light
Bb Cm
Shines on me
Cm Ab
If you wanna touch flames
Bb Cm
Come unto me

(Cm Ab Bb Cm)
(Cm Ab Bb Cm)
(Cm Ab Bb Cm)
(Cm Ab Bb Cm)

Cm Ab
Got a flame
Bb Cm
Burns inside
Cm Ab
If you don't wanna burn
Bb Cm
Just walk on by
Cm Ab
And the pain
Bb Cm
You're feeling now
Cm Ab
Is nothing compared
Bb Cm
To the pleasures I hide

Cm Ab
Devil's plaything
Bb Cm
In my hands
Cm Ab
If you don't want pain
Bb Cm
You don't understand

Cm Ab
Got a light
Bb Cm
Shines on me
Cm Ab
If you wanna touch flames
Bb Cm
Come unto me
Cm Ab
Got a flame
Bb Cm
In my hand
Cm Ab
If you don't want a fire
Bb Cm
Step out of my light
Cm Ab
Walk on by
Bb Cm
Just look away
Cm Ab
'Cause if you're on my path
Bb Cm
You're better off dead

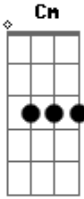
Cm Ab
Devil's plaything
Bb Cm
In my hands
Cm Ab
If you don't want pain
Bb Cm
You don't understand
Cm Ab Bb Cm
Oh Oh Oh Oh

Cm Ab
Got a light
Bb Cm
Shines on me
Cm Ab

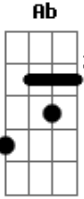
If you wanna touch flames
Then Come unto me

Bb Ab

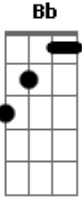
Acordes



© ukulele-chords.com



© ukulele-chords.com



© ukulele-chords.com

[Final] Cm Ab Bb
Cm Ab Bb Cm