

Black Label Society - Nothing Left To Say

Tom: **D**

Intro: **D D D**
D D D

D
For I could not think
D
Within this silence that grows cold
D
Weighted down within this grief
D
For I wish I could have sown
D D
No matter how far I have fled
D
For I could not get away
D
Nothing left to mend
D
Nothing left to say

D C G
Fly away
D C G
Nothing left to say
D C G
Fly away
Bb A
My wings, they may be bent
D D D
But I could not stay

D D
Empty words without remorse
D
Burning with regret
D
Salvation had been lost

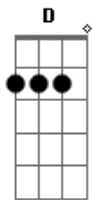
D D
With your need to be found on me
D D
No matter how far I have fled
D
For I could not get away
D
Nothing left to mend
D
Nothing left to say

D C G
Fly away
D C G
Nothing left to say
D C G
Fly away
Bb A
My wings, they may be bent
D D D
But I could not stay

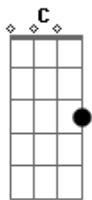
[Solo] **D D D**
D D D
D D D
D D D
D D D

G D
No matter how far I have fled
F E
For I could not get away
C G
Nothing left to say
Bb A
oh My wings, they may be bent
(**D D D**)

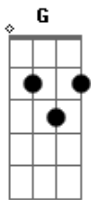
Acordes



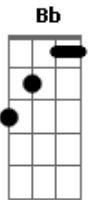
© ukulele-chords.com



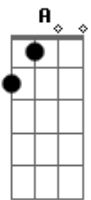
© ukulele-chords.com



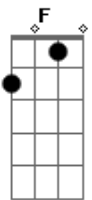
© ukulele-chords.com



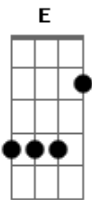
© ukulele-chords.com



© ukulele-chords.com



© ukulele-chords.com



© ukulele-chords.com