

Brown Bird - Pale and Paralyzed

Tom: D

Bm **Em** **Gb**
Even the walls are shaking her down and breaking her mind with
unsettling sounds

Bm **Em** **Gb**
courage collapses and uncertainty rings she tries to summon
the strength to (...)

Bm **Em** **Gb**
Sinks her teeth into a terrible rage (...) it fix into the
darkness

Bm **Em** **Gb**
She's losing her ground and the war being waged the war being
waged by madness

Bm **Gb** **Bm** **Gb**
She's falling and praying to the shadows caught in the haze
with her sadness stage

G Gb G Gb
Maybe the ground will open Surely the earth will swallow her
whole

G Gb G Gb
One crack and blow to the Temple

G Gb G Gb
That takes home she's lost control

Bm **Em** **Gb**
Fire pursuits on the corridor wall she jumps at the sound of
each footfall

Bm **Em** **Gb**

long and dark is the Journey ahead at home her body turns and
tosses in bed

Bm **Em** **Gb**
Often she thinks she hear somebody mean but is just her own
blood rushing in her ears

Bm **Em** **Gb**
The force Inside of her that steers with her head told the
beast in the darkness

Bm **Em** **Gb**
the truth she seeks in the shadows half way between being
alive and dead

G Gb G Gb

The devil is out for her tonight under the moonlight sky above

G Gb G Gb

She's frozen in fear from lord and fright

G Gb G Gb

And in her bloodshot eyes she sees the moon up high

G Gb G Gb

Pale and paralyzed so brighter and white as the bones of a
dove.

G Gb G Gb

Maybe the ground will open Surely the earth will swallow her
whole

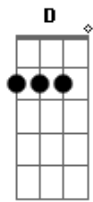
G Gb G Gb

One crack and blow to the Temple

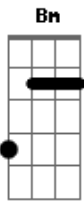
G Gb G Gb

That takes home she's lost control

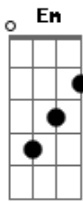
Acordes



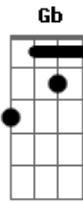
© ukulele-chords.com



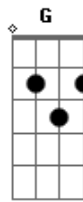
© ukulele-chords.com



© ukulele-chords.com



© ukulele-chords.com



© ukulele-chords.com