

# Céline Dion - Courage

tom:

Am  
I would be lying if I said I'm fine  
F  
I think of you at least a hundred times  
Am Am Em7  
'Cause in the echo of my voice I hear your words  
F  
Just like you're there

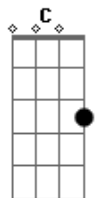
Am Am Em  
I still come home from a long day  
F  
So much to talk about so much to say  
Am Am Em  
I love to think that we're still making plans  
F  
In conversations that'll never end  
F  
In conversations that'll never end

C  
Courage  
Don't you dare fail me now  
C F  
I need you to keep away the doubts  
F Am  
I'm staring in the face of something new  
Em F  
You're all I got to hold on to  
F  
So courage  
C G  
Don't you dare fail me now

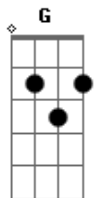
Am Am Em  
Not one to hide from the truth I know  
F  
It's out of my hands but I won't let you go  
Am Am Em  
There's no replacing the way you touched me  
F  
I still feel the rush

Am Am Em  
Sometimes it drowns me until I can't breath  
F  
Thinking it's only in our memories  
Am Am Em  
But then I talk to you like I did then  
F  
In conversations that will never end

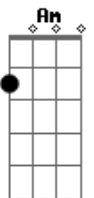
## Acordes



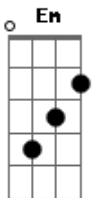
© ukulele-chords.com



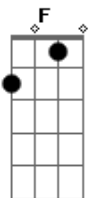
© ukulele-chords.com



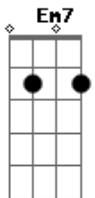
© ukulele-chords.com



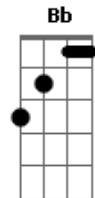
© ukulele-chords.com



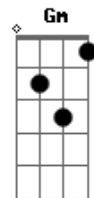
© ukulele-chords.com



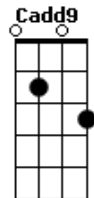
© ukulele-chords.com



© ukulele-chords.com



© ukulele-chords.com



ukulele-chords.com

C  
Courage  
Don't you dare fail me now  
C F  
I need you to keep away the doubts  
F Am  
I'm staring in the face of something new  
Em F  
You're all I got to hold on to  
F  
So courage  
C G  
Don't you dare fail me now

C  
'Cause it's not easy  
F  
When you're not with me  
Am  
This world of madness  
G  
Goes faster now  
C  
And it's a train wreck  
F  
But I won't crash yet  
Am  
Long as your echo  
G  
Never fades out

( Bb Gm C C Cadd9 C )  
( Bb Gm G G )

C C F  
Courage don't you dare fail me now  
C  
'Cause it's not easy  
F  
When you're not with me  
Am  
This world of madness  
G  
Goes faster now  
C  
And it's a train wreck  
F  
But I won't crash yet  
Am  
Long as your echo  
G  
Never fades out

C G Am F  
Courage don't you dare fail me now