

Courtney Barnett - Nobody Really Cares If You Don't Go To The Party

Tom: E
Intro: E A A A E A A A
E A A A E A A A

E A E A A A
You always get what you want
E A E A A A
And you don't even try
E A E A
Your friends hate it when its always going your way
E A A A
But I'm glad that you've got luck on your side
E A E A A A
You're saying definitely maybe
E A E A A A
I'm saying probably no
E A E
You say "You sleep when you're dead"
E A
I'm scared I'll die in my sleep
E A E A A
I guess that's not a bad way to go

E A E A E A2 E
I wanna go out but I wanna stay home
E A E A E A2 E
I wanna go out but I wanna stay home

E A E A A A

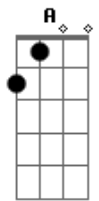
Why are you so eager to please?
E A E A A A
I wear my heart on my sleeve
E A E A
Gets harder in the winter, gotta be a fake or shiver
E A E A A A
It takes a great deal out of me
E A E A A A
Yes I like hearing your stories
E A E A A A
But I've heard them all before
E A E A
I'd rather stay in bed with the rain over my head
E A E A A A
Than have to pick my brain up off of the floor

E A E A E A2 E
I wanna go out but I wanna stay home
E A E A E A2 E
I wanna go out but I wanna stay home

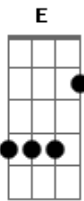
[Solo] E A E A A A
E A E A B

E A E A E A2 E
I wanna go out but I wanna stay home
E A E A E A2 E
I wanna go out but I wanna stay home

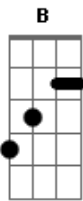
Acordes



© ukulele-chords.com



© ukulele-chords.com



© ukulele-chords.com