

Danni Carlos - Kiss From a Rose

Tom: **F**

(intro)

G There used to be a graying tower alone on the sea
Eb F G
 You became the light on the dark side of me
Eb F G
 Love remains a drug that's the high and not the pill
G Gm Eb F
 Did you know that when it snows my eyes become larger
Eb F G
 And the light that you shine can't be seen?

(refrão)

Eb F G
 Baby, I compare you to a kiss from a rose on the gray
Eb F G
 Ooh, the more I get of you the stranger it feels, yeah
Eb F Eb F
G Now that your rose is in bloom, a light hits the gloom on the gray

G Eb F G
 There is so much a man can tell you, so much he can say
Eb F G
 You remain my power, my pleasure, my pain
Eb F
 Baby, to me you're like a growin' addiction that I can't deny
Eb F
 Won't you tell me is--that healthy, babe?
G Gm Eb F
 Did you know that when it snows my eyes become larger
Eb F G

And the light that you shine can't be seen?

(refrão)

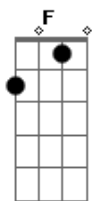
Eb F G
 Baby, I compare you to a kiss from a rose on the gray
Eb F G
 Ooh, the more I get of you the stranger it feels, yeah
Eb F Eb F
G Now that your rose is in bloom, a light hits the gloom on the gray

[Conselho: quando sair do Arranjo, note que a melodia continuará no F.
 Faça no Arranjo o **F** variante do **C** (x87565) e na Ponte conseguinte o **F** variante do **E**]

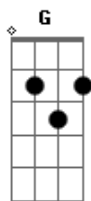
(ponte)

F C Bb F
 I've been kissed by a rose on the gray
C Bb G
 I've been kissed by a rose on the gray
Eb F G
 There is so much a man can tell you, so much he can say
Eb F G
 You remain my power, my pleasure, my pain
Eb F
G Baby, to me you're like a growin' addiction that I can't deny
Eb F
 Won't you tell me is--that healthy, babe?
G Gm Eb F
 Did you know that when it snows my eyes become larger
Eb F G
 And the light that you shine can't be seen?

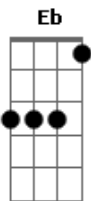
Acordes



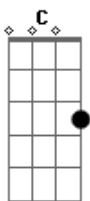
© ukulele-chords.com



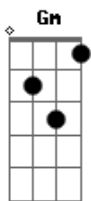
© ukulele-chords.com



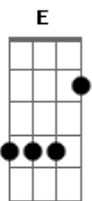
© ukulele-chords.com



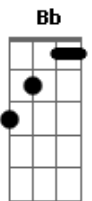
© ukulele-chords.com



© ukulele-chords.com



© ukulele-chords.com



© ukulele-chords.com