

Depeche Mode - Hole To Feed

Tom: **F**

We are here **Dm**

We can love **F**

We share something **A**

I'm sure that you mean the world to me **Dm F A**

Your name was the one that was always chosen **Dm**

Your words and your kindness have set me free **E**

Shame has a hold that has kept us frozen **Dm**

You opened my eyes to a world that I could believe **E**

And words can leave you broken inside **C Gm**

You'll have to decide **F**

I'm hanging on to my pride **Gm**

We are here **Dm**

We can love **F**

We share something **A**

I'm sure that you mean the world to me **Dm F A**

When you get what you need **Dm F**

There's no way of knowing **A**

What you'll have is another hole to feed **Dm F A**

The games that we're playing, they've left us hoping **Dm**

The gift that we have, the life that we breathe **E**

This world can leave you broken inside **C Gm**

With nowhere to hide **F**

I'm hanging on to my pride **Gm**

We are here **Am**

We've been chosen **F**

We've been blessed with a place **Gm**

We need to find and then open **Bb**

We are here **Dm**

We can love **F**

We share something **A**

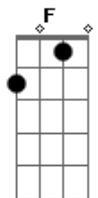
I'm sure that you mean the world to me **Dm F A**

When you get what you need **Dm F**

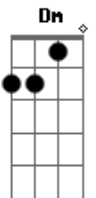
There's no way of knowing **A**

What you'll have is another hole to feed **Dm F A**

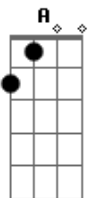
Acordes



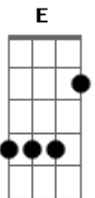
© ukulele-chords.com



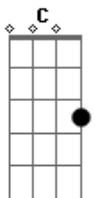
© ukulele-chords.com



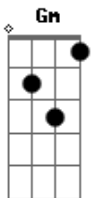
© ukulele-chords.com



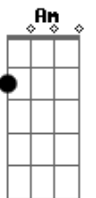
© ukulele-chords.com



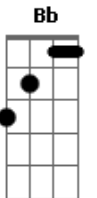
© ukulele-chords.com



© ukulele-chords.com



© ukulele-chords.com



© ukulele-chords.com