

Fleetwood Mac - Albatross

Tom: **C**

From M Thu Jan 11 15:58:01 1996
Received: from ([]) by (8..7.3) with SMTP id IA**A**687 for ;
Thu, 11 Jan 1996 08:23:06 -0800 (PST)
Received: from ([]) by
id ai09340; 11 Jan 96 16:12 GMT
Received: from ([]) by
id aa03915; 11 Jan 96 16:11 GMT
Date: Thu, 11 Jan 1996 15:58:01 GMT
From: Malc Brookes
Reply-To: M
Message-Id:
To:
Cc:
X-Mailer: FIMail V0.9d
X-User: Alpha Test Version Of FI-Mail, DisWin
1.5C:\WINSOCK\WINDIS
Lines: 164
Status: 0

I'm sorry, I checked it and checked it, thought it was okay and sent it.
But I have since discovered a tiny error, so here's the corrected version.

Tabbed by Malc Brookes

I arranged this for solo acoustic guitar several years ago. In section **B** the bass switches from **Gb** to **A** (which is in the chord of **Gbm**) as it wasn't possible to keep the original melody and bass. In section **C** the melody is dropped a whole octave, which allows the **Gb** bass line to be preserved and sounds better, I feel, on an acoustic than playing it above the 12th fret.

Regards

Malc

Key:
h - hammer-on
p - pull-off
/ - slide up
\ - slide down

Section **A** (play twice)

1st time through (X)

2nd time through

Section **B** (play twice)

Section **C**

Section **D**

Repeat Section **A** once through to (X) and end with:

--

Malc Brookes, St Helens, England
EMail:
WWW: http://

From Mon Jan 15 00:04:01 PST 1996
Article: 52660 of
Path: !!!caen!!!!!!pipex!demon!
From: (Malc Brookes)
Newsgroups:
Date: Thu, 11 Jan 1996 12:54:15 GMT
Lines: 26
Message-ID:
References:

Sorry, I've since spotted a slight error.
In Section **B** the following

should be

Regards

Malc

Malc Brookes, St Helens, England
EMail:
WWW: http://

From M Mon Jan 22 11:36:04 1996
Received: from ([]) by (8..7.3) with SMTP id GAA28909 for ;
Mon, 22 Jan 1996 06:20:30 -0800 (PST)
Received: from ([]) by
id ab24922; 22 Jan 96 13:09 GMT
Received: from ([]) by
id aa08555; 22 Jan 96 13:08 GMT
Date: Mon, 22 Jan 1996 11:36:04 GMT
From: Malc Brookes
Reply-To: M
Message-Id:
To:
X-Mailer: FIMail V0.9d
X-User: Alpha Test Version Of FI-Mail, DisWin
1.5C:\WINSOCK\WINDIS
Lines: 175

In your message dated Thursday 11, January 1996 you wrote :
> Archived as music/acoustic/f/fleetwood_mac/.
>
> I superceded the older copy you sent.
>
> Thanks
> Dean

I've had some feedback about this tab, and I'm afraid I made a slight error in one section. Sometimes it doesn't matter how long you stare at something, a glaring mistake always seems to slip through. Sorry, here's a corrected version.

Regards, Malc

Tabbed by Malc Brookes

I arranged this for solo acoustic guitar several years ago. In section **B** the bass switches from **Gb** to **A** (which is in the chord of **Gbm**) as it wasn't possible to keep the original melody and bass. In section **C** the melody is dropped a whole octave, which allows the **Gb** bass line to be preserved and sounds better, I feel, on an acoustic than playing it above the 12th fret.

Regards

Key:
h - hammer-on
p - pull-off
/ - slide up
\ - slide down

Section A (play twice)

1st time through (X)

2nd time through

Section B (play twice)

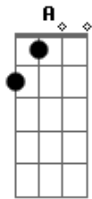
Section D

Repeat Section A once through to (X) and end with:

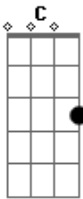
--

Malc Brookes, St Helens, England
EMail:
WWW: <http://>

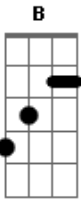
Acordes



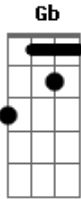
© ukulele-chords.com



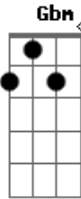
© ukulele-chords.com



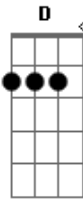
© ukulele-chords.com



© ukulele-chords.com



© ukulele-chords.com



© ukulele-chords.com