

Gabriel Guedes - O Senhor É Meu Pastor

tom:

Intro: Gm7 Bb F Eb

O Senhor é bom

E eu não temerei

Mal algum sobrevirá contra mim

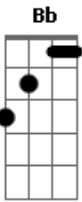
Se eu andar na Luz

E seguir a Jesus

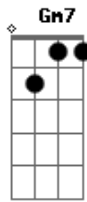
Em Seus braços seguro estarei

Pois o Senhor

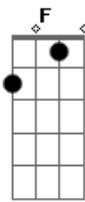
Acordes



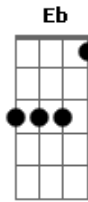
© ukulele-chords.com



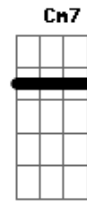
© ukulele-chords.com



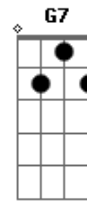
© ukulele-chords.com



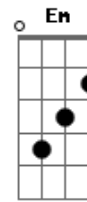
© ukulele-chords.com



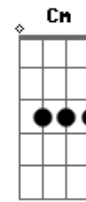
© ukulele-chords.com



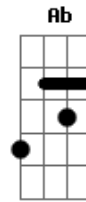
© ukulele-chords.com



© ukulele-chords.com



© ukulele-chords.com



© ukulele-chords.com

É o meu pastor
 Cm7 Cm F Ab G7
 Nele confiarei
 Cm7 Cm F
 Pois o Senhor
 Bb Bb Eb
 É o meu pastor
 Cm7 Bb F Bb
 A quem eu temerei?
 Cm7 Eb
 Em Tua luz andarei
 F G7
 Sim eu posso descansar
 Cm7 Eb
 Em Tua palavra confiarei
 F G7
 Tua mão me guardará