

Gatton - More

tom:

Intro: B Dbm Ebm E

I always saw the lights Gb

Right here and not the sky E

I thought I had to fight Ab Gb

To make my footprints deep E

At least deep enough to see Ab Gb

All this visibility

[Refrão]

B Dbm Ebm E

Well, wasn't it supposed to be more grand?

B Dbm Ebm E

I swore on the plane I'd find the cure for dissonance Gb Ebm E

Flying through this thoughtless course B Dbm Ebm E

Wasn't it supposed to be more?

[Primeira Parte]

And I never let the time Gb

Float by without my mind E

Attempting some design Ab Gb

Oooh E

And now I see it through Gb

A lens I couldn't use E

And a path I didn't choose Ab Gb

Oooh

[Refrão]

B Dbm Ebm E

Well, wasn't it supposed to be more grand?

B Dbm Ebm E

I swore on the plane I'd find the cure for dissonance Gb Ebm E

Flying through this thoughtless course B Dbm Ebm E

Wasn't it supposed to be more?

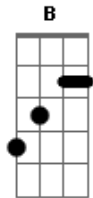
[Ponte] B Ebm E Em

Got stuck looking back B Ebm E

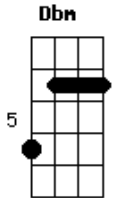
I'm looking forward now Em

Forward now

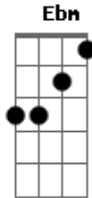
Acordes



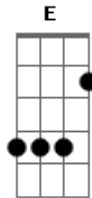
© ukulele-chords.com



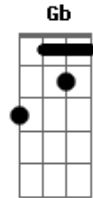
© ukulele-chords.com



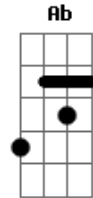
© ukulele-chords.com



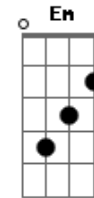
© ukulele-chords.com



© ukulele-chords.com



© ukulele-chords.com



© ukulele-chords.com