

# Glee - To Sir With Love

Tom: **A**

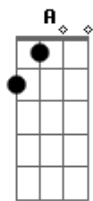
**A**  
Those school girl days  
**B7** **D** **A**  
of telling tales and biting nails are gone

But in my mind  
**B7** **D** **A**  
I know they will still live on and on  
**Ab** **Dbm**  
But how do you thank someone  
**Ab** **Dbm**  
who has taken you from crayons to perfume  
**B** **E** **B** **Gb7**  
It isn't easy but I'll tryyyyyyy

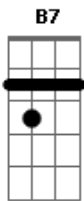
**B**  
If you wanted the sky  
**A** **B**  
I'd write across the sky in letters  
**A** **B**  
that would sour a thousand feet high  
**E** **Gb7**  
To Sir, With Love

**A** **B7**  
The time has come for closing  
**D** **A**  
books and long last looks must end  
  
And as I leave  
**B7** **D** **A**  
I know that I am leaving my best friend  
**Ab** **Dbm**  
A friend who taught me right from wrong  
**Ab**  
and weak from strong,  
**Dbm**  
that's a lot to learn  
**B** **E** **B** **Gb7**  
What! what can I give you in retuuuuurn  
**B**  
If you wanted the moon  
**A** **B**  
I would try to make a start But I  
**A** **B**  
would rather you let me give my heart  
**E** **Gb7**  
To Sir, With Love.

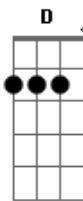
## Acordes



© ukulele-chords.com



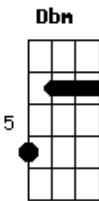
© ukulele-chords.com



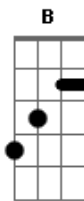
© ukulele-chords.com



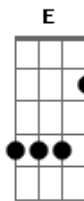
© ukulele-chords.com



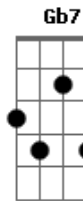
© ukulele-chords.com



© ukulele-chords.com



© ukulele-chords.com



© ukulele-chords.com