

God Help The Girl - The Psychiatrist Is In

Tom: F

F A
Grow up you're nearly thirty one
Bb C
What happened when you were a child
F A
Do you require an analyst?
Bb C
Or will a friendly smile suffice?

Bb Bbm
Find your space, are you breathing well
F
Do you fell ok?
Bb Bbm
Are you calm, are you comfortable?
Gm
Is your heartbeat racing?
C
Is this your soul you're facing?

F A
Lay down my couch is over there
Bb C
I think you'll find its way more comfortable
F A
Take off your glasses don't be scared
Bb C
For thirty pounds
F
I'll listen to your stories dear
A
Shut the window there

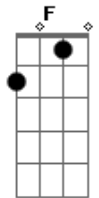
Bb Bbm
We should keep the session intimate, don't you agree?

F Bb
I have expericence in matters similar
F Bb
I can't juggle I can't knit a pinafore
F Bb Gm C
But I'll listen to your tale and give you some advice
(solo) (Bb Bbm F Bb Bbm Gm C)

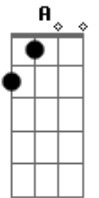
F A
I was an ace when i was young
Bb C
I learned to dance, i didn't have to learn
F A
I was a case when i grew up
Bb C F
A case of hope, crashing to the ground

A
I learned, i hit the skids
Bb Bbm
And i woke up me, myself and i was a different person
F Bb
If i take you on will you be pliable?
F Bb
As a confidante I'm quite reliable
F
Dreamer, though you are
Bb F
Is it you that's been my signpost so far

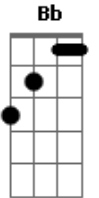
Acordes



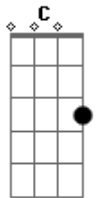
© ukulele-chords.com



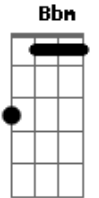
© ukulele-chords.com



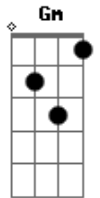
© ukulele-chords.com



© ukulele-chords.com



© ukulele-chords.com



© ukulele-chords.com