

Hanson - Sometimes

Tom: F

I. Hanson / T. Hanson / Z. Hanson

Intro:] F F

F F F F F F F Bb
 Sometimes I get wrapped up in what I want you to be
 C F F F
 I guess sometimes I forget just how much you mean to me
 F F F F F F F Bb
 Sometimes I get wrapped up in what I want us to be like
 Bb C F F F F
 Then I forget just how much I need you in this life

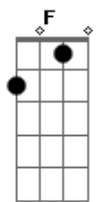
Bbm F F F F Bbm
 And I know it's not my place to judge
 F F F F
 Who you are or what you're going to be

Bb C Bb
 I guess sometimes I forget who-ho
 C F F
 Just how much you mean to me

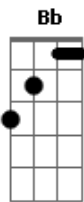
Sometimes I get wrapped up in always being right
 Then I forget I'm wrong most the time
 Sometimes I miss your tender kiss
 And being the man to understand

Bb C Dm C Bb
 I guess sometimes I just don't know
 C Dm C Bb
 How to say exactly how I feel inside
 C Dm Bb
 I guess sometimes I just don't know
 C F F F F
 How to say that I love you

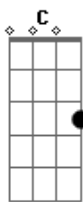
Acordes



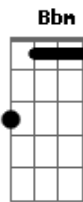
© ukulele-chords.com



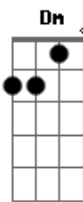
© ukulele-chords.com



© ukulele-chords.com



© ukulele-chords.com



© ukulele-chords.com