

# Ignacio Samuel - I Owe You a Dime

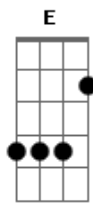
tom:  
Intro: B7M B7M B7M  
E E

B7M B7M  
Don't look away  
B7M E  
I'm trying to guess  
E  
What's in your mind  
B7M B7M  
Give me a clue  
B7M E  
Give me a hint  
E  
Maybe a rhyme

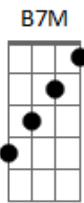
B7M E7M  
Hey, pretty boy  
B7M E7M  
Won't you try and guess what's on my mind?  
B7M E7M E7  
I bet you a dime that you'll get it wrong  
B7M E7M E7 Ebm  
It starts with an ?I? and ends with a ?U?  
Dbm B7M  
Oh no, I owe you a dime  
( B7M B7M E7M E )

B7M B7M  
Go on with your day  
B7M E  
And don't you forget  
E  
The warmth of my arms  
B7M B7M  
While you're still here  
B7M E  
Let's play a game  
E

## Acordes



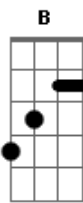
© ukulele-chords.com



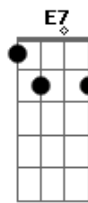
© ukulele-chords.com



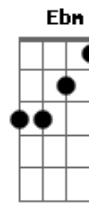
© ukulele-chords.com



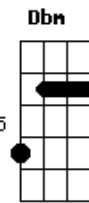
© ukulele-chords.com



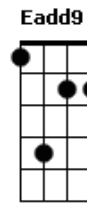
© ukulele-chords.com



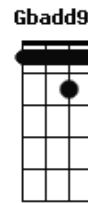
© ukulele-chords.com



ukulele-chords.com



ukulele-chords.com



ukulele-chords.com

It'll be fun

B7M E7M  
Hey, pretty boy  
B7M E7M  
Won't you try and guess what's on my mind?  
B7M E7M E7  
I bet you a dime that you'll get it wrong  
B7M E7M E7 Ebm  
It starts with an ?I? and ends with a ?U?  
Dbm B7M  
Oh no, I owe you a dime

B7M B7M  
(I owe you a dime)

( E7M E )

Dbm  
But if by chance, you suspect that I'm lying  
Ebm  
Please don't (Please don't)

Dbm  
You know you're mine, and there's no point in trying  
Ebm  
To convince me I'm wrong  
E7M  
You're mine (Mine)  
Eadd9  
Mine (Mine)  
Gbadd9  
Mine (Mine)

B7M E7M  
It starts with an ?I? and ends with a ?U?  
B7M E7M  
I-l-o-v-e-y-o-u  
B7M E7M E7  
It starts with an ?I? and ends with a ?U?  
B7M E7M E7  
I-l-o-v-e-y-o-u  
Ebm Dbm B7M  
Oh no, I owe you a dime