

Iron Maiden - Hallowed Be Thy Name

Tom: **G**

(Solo's copied)

Intro: This is the guitar part at the start. It is picked with the thumb and ring finger. The high notes are all fingered with the little finger of the left hand. I've shown which finger to use for the low notes.

depois e assim

depois e assim

BASSLINE:

LEAD UNDER "Running Low" etc.
These first two bars are repeated over and over on the album version. I've gone on to show roughly how it's played live
The first trill allows Dave to get the pick out of his teeth!

RIFF A: with RHYTHM 1

(LIVE)

RHYTHM 1:
This is doubled by the bass. It is the rhythm that is used for the verses later on in the song aswell.

RIFF B:
This is the riff between 'Running Low' and 'When the priest..' As I suspected I was playing this wrong-sheer laziness! This should be a lot closer to the proper way. The hammers and pulls may or may not be the actual way its played but if you want to play it as fast as its played live it's definitely the easiest way. Just listen carefully for the timing.

Bass plays Rhythm 1.

BOTH GUITARS

RHYTHM FOR SINGING:

When the priest... Take a look... Of a world...

Somebody...

After the singing play RIFF B

RIFF C:
Gtr I (Dave)
E(m)

Gtr II (Adrian) just plays the first measure above over and over (i.e. doesn't change to **C**) and the bass plays in unison with Dave.
Then Dave continues to play RIFF C, (leaving out the notes in brackets), while Adrian plays the following harmony and Steve plays the following bassline.

BASSLINE:

NEXT VOCAL PART:
When the guards... etc. This is played with RHYTHM 1.

Then it goes back to RIFF **C** with Dave playing RIFF **C** as written without the notes in brackets and Adrian playing the first bar over and over (as before).

BRIDGE:
Gtr I (Dave)

RHYTHM:

FAST BIT:

RHYTHM FOR SOLO'S:

E(m)

BIT AFTER SOLO'S:
Play three times

E(m)

On the third repeat Adrian plays:

HARMONY:
Dave plays RIFF **B** as before and Adrian plays the following.
What I said earlier about tha hammers and pulls still applies.

As the harmony part nears it's end the following part is played
in place of the second bar of RIFF **B**:

ENDING:
For Yeah, Yeah, Yeah... play RHYTHM 1. When Dave returns to the **E** power chord he plays a dive bomb with the T-bar.
Then play the lead part from the BRIDGE as shown above except with this rhythm part.

and eventually

Solo 1: (Dave)
(**D**) **E**

```

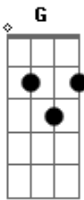
|-----|
|-----/5--|
|-----2b~~-2br2~~-----|
|--0\-----|
|--0\ PICK SCRAPE|-----|
|-----|

```

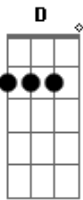
Solo 2: (Adrian)

D T P H T P H T P H T P H T P H T P H T P H

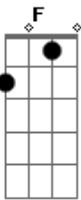
Acordes



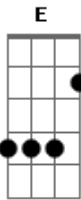
© ukulele-chords.com



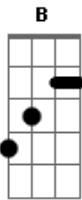
© ukulele-chords.com



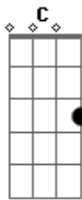
© ukulele-chords.com



© ukulele-chords.com



© ukulele-chords.com



© ukulele-chords.com