

Jamiroquai - Autamaton

Tom: E
Intro: Gbm E Abm Ebm Gbm E Abm Ebm

Dm
In my love

Every heart is beating Bm
I'm all love Dm
Can't you feel me feeling? Bm
Take my hand Dm
Cold like a junkie Bm
I'm an ice cold man Dm
(I'm an ice cold man)
Why am I crying for you? E

Gbm E
All this love I felt for you
Abm Ebm
Has gone away to another place
(It's a digital life)
Gbm E
I put my faith in a digital world
Where they've given me
Abm B
Eyes without a face
Gbm E
I stare at the the moon on silver nights
Abm Ebm
Remind myself I am someone
Gbm E
My soul is null and void tonight
Gbm
I'm automaton

Dm
I'm so tough
Can't you see me running? Bm
See, I can touch Dm
Can you feel me coming? Bm
I see the world Dm
In claws of freedom Bm
These metal eyes, they can't disguise Dm
The fact that I
Dm
Need something to believe in
But they're not crying for you Bm

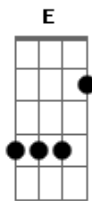
Gbm E
I said goodbye to the world I knew
Abm Ebm
And took off into inner space
(It's a digital life)
Gbm E
Weren't you the ones who promised me
Abm B
A very different place?
Gbm E
I power up, get my program set
Abm Ebm
And turn my head toward the sun
Gbm E
Inside I know, I'm null and void
Gbm
I'm automaton

Bm Abm
Automaton
Bm Abm
Automaton
Bm Abm
Automaton
Bm Abm
Automaton
Bm Abm
Hey, you got me down underground
Bm Abm
Gettin' holed up in my cyber lounge
Bm Abm
As if I had time to break that down
(Automaton)
Bm Abm
Whatever you can do I can override it
Bm Abm
Got a million ways to synthesize it
Bm Abm
Digital android, I can fight it
E
Fight it out
Bm Abm
Automaton (it's a digital life)
Bm Abm
Automaton (digital life)
Bm Abm
Automaton (a digital life)
Bm Abm
Automaton

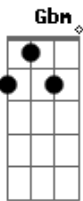
Gbm E
Feel like a man who fell to earth
Abm Ebm
But this is not where I belong
Gbm E
They rule my life from a metal box
That's windowless
Abm Bm
And I wonder where it all goes wrong
Gbm E
Maybe this dream will stay alive
Abm Ebm
But can the madness be undone?
Gbm E
Am I the new intelligence?

Gbm E
I'm automaton
Gbm E
I'm automaton
Abm Ebm
I'm automaton
Abm Ebm
I'm automaton
Gbm E
I'm automaton
Gbm E
I'm automaton
Abm Ebm
I'm automaton
It's a digital life
Abm Ebm
It's a digital life
Gbm E Abm Ebm
You know I need something I can hold onto, hold onto
Ebm
(You were all I knew)
Ebm
(I'm automaton)
Gbm E
I need something
Abm Ebm
I can hold onto, hold onto
Gbm E
E isso ai galera

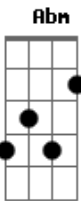
Acordes



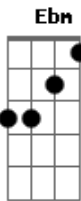
© ukulele-chords.com



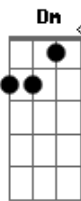
© ukulele-chords.com



© ukulele-chords.com



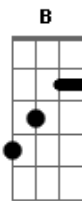
© ukulele-chords.com



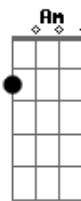
© ukulele-chords.com



© ukulele-chords.com



© ukulele-chords.com



© ukulele-chords.com