

Jimmy Eat World - Always Be

Tom: **F**

Verse 1 (intro same chords)

F
Could have been a night like any other

Bb
One of us has to drive, once of us gets to think

F
I'll force a laugh to break the silence

Bb
It's going to get harder still before it gets easy

PreChorus

C
You can't keep safe what wants to break

F **Dm**
I'm alone in this

Bb
I'ma as I've always been

C
Right behind what's happening

She's lost in this
She's like she'll always be

Dm Verse 2 (same chords as V1)
I was just a boy like every other
Thought I was something fierce
I thought I was ten times smarter

Dm Love would be something that I'd just know
How are you going to know the feeling
Until you've lost it?

I've been losing plenty since..

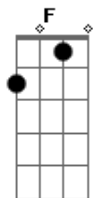
Bb Chorus

Bridge

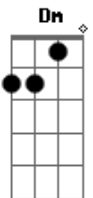
C **Dm** **Bb**
Maybe something else I'm missing
Something good and you're the reason
It's a dream but there's a real world waiting

C Chorus

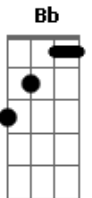
Acordes



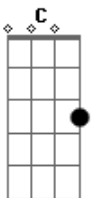
© ukulele-chords.com



© ukulele-chords.com



© ukulele-chords.com



© ukulele-chords.com