

Johnny Cash - The Devil Came Back To Georgia

Tom: F

Dm C Dm C Bb A G F E Dm Bb C Dm

Dm
It's been 10 long years since the Devil laid
His fiddle at Johnny's feet
And it burned inside his mind
The way he suffered that defeat
It the darkest pits of Hell
The Devil hatched an evil plan
To tempt the fiddle player
For he's just a mortal man

Bb C Dm

The sin of pride, the Devil cried,
Is what will do you in
I thought we had this settled

Bb C Dm

I'm the best there's ever been.

Dm
Johnny didn't you ever know

C

That time keeps marchin' on

Gm

The coldest hour is the one

Dm

That comes just before the dawn
The Devil's back in Georgia

Gm

Will you stand up to the test

A

Or will you let the Devil be the best.

Dm C Dm C Bb A G F E Dm Bb C Dm

Dm
Sure thing, I haven't played much
Since the baby came in June
But give me half a minute
I'll get this fiddle back in tune
The Devil grabbed the golden fiddle
Out of Johnny's hand and said
I'm the fiddle player underground

Bb C Dm

And I walk upon the land.

Dm F E Dm Dm F E Dm Bb A G F E Dm Bb C Dm

Dm

Y'all just better be turning back
If you want this boy to win
Cause practice is the only cure
For the predicament he's in
Now, Devil, it would be a sin
For you to get my vote
So just go on back to Hell
And to the woodshed I will go.

Dm C Dm C

Dm
Johnny are you practicing

C

Or will your hands grow cold

Gm

The Devil walks the land

Dm

And plays a fiddle made of gold

Gm

Can you hear the baby cryin', will he ever know

A

That the Devil wants his daddy's very soul.

Dm C Dm C E Dm E Dm E Dm B Bb C E

E
Before we play I wanna thank you
For lettin' God's own word ring through
He said you can't be trusted
Yeah so what you gonna do
Well you get your fiddle Devil
If you think that you could win
Cause I beat you once you old dog

Bb C E

And I'll whoop your butt again.

E

John Brown screamed the Devils red

Dm

My little baby loves shortening bread

E

The Devil's screams that he can win

Dm

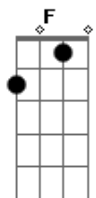
But Johnny is the best there's ever been.

E Dm E Dm E Dm B E Dm E Dm E Dm

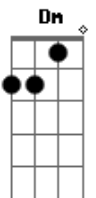
E Dm C B, E Dm C B, E Dm C B, E Dm C B

E Dm C B A G A B C Dm E.

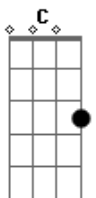
Acordes



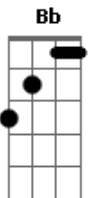
© ukulele-chords.com



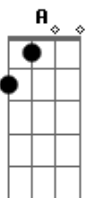
© ukulele-chords.com



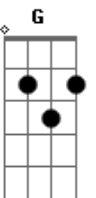
© ukulele-chords.com



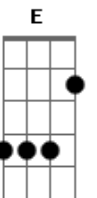
© ukulele-chords.com



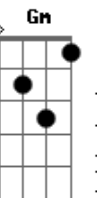
© ukulele-chords.com



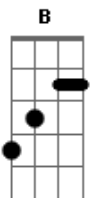
© ukulele-chords.com



© ukulele-chords.com



© ukulele-chords.com



© ukulele-chords.com