

Joji - Past Won't Leave My Bed

tom:
F F

F Bb
This room could be haunted, a vision to the blind

F Bb
Wishing sleep held me in her arms forever

Dm Gm
Shadows dance around, perfectly blurring up the lines

Gm7 C
Hallucinations start to intertwine

F Bb
I open my eyes

F Bb
Her face lingers on the walls

Dm Gm
She's stuck on rewind in my mind

Gm7 C F
I try to move on, but the past won't leave my bed

F Bb
I hear it all the time like the wind between the chimes

F Bb

Holding on to what we had together
Dm Gm
A single note of my persistent hopeless lullabies
Gm7 C
I know that I can't sleep forever

F Bb
I open my eyes

F Bb
Her face lingers on the walls

Dm Gm
She's stuck on rewind in my mind

Gm7 C F
I try to move on, but the past won't leave my bed

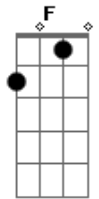
F Bb
I open my eyes

F Bb
Her face lingers on the walls

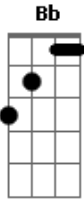
Dm Gm
She's stuck on rewind in my mind

Gm7 C F
I try to move on, but the past won't leave my bed

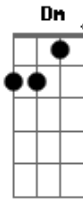
Acordes



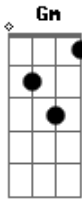
© ukulele-chords.com



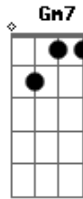
© ukulele-chords.com



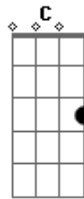
© ukulele-chords.com



© ukulele-chords.com



© ukulele-chords.com



© ukulele-chords.com