

Journey - Dont Be Down On Me Baby

Tom: **A**

E
I dont know why, theres an open flame
A **B**
Burning in the game, its me you blame
E **B**
I cant deny, it was a crime
A
If you would let me try
B
Maybe youd change your mind

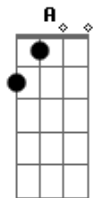
E
Dont be down on me baby
Dbm
Down on me girl
A
I get lost sometimes
C
In my crazy world

E **B**
Those little things, you said i do
A
Well they might be true
B
Tell me what good does it do...
E **B**
When things go wrong, im the first you blame
A
I try another way
B
Still someones gotta pay

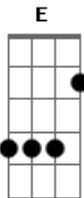
Solo: **E C D**

E **C**
Dont be down on me baby
Dbm **B**
Cause i love you
A
Cause i need you

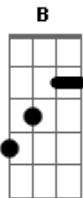
Acordes



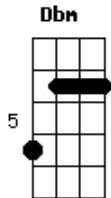
© ukulele-chords.com



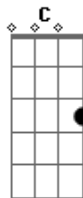
© ukulele-chords.com



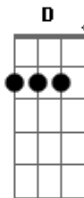
© ukulele-chords.com



© ukulele-chords.com



© ukulele-chords.com



© ukulele-chords.com