

Lana Del Rey - Wait For Life

Tom: F
Intro: F Am Bb Dm

Dm A C G
Why you make me work so hard to put on the evening show
Dm A C G
When you know that all I want is to make your money grow?
Dm A C G
You're like a baby who don't got nowhere to go
Dm A C G
I feel you eyeing me You keep it on the low

C F Am
But I can't let you in And I can't keep you out.
Bb Dm
I wait for life to end But it never comes around.
F Am
And I can't hear you call And I can't hear me shout.
Bb Dm
I wait for it to break But it never comes around.
F Bb,
Don't know me
F Bbm F
I'm lonely I'm lonely

Dm A C G
Why you make me take that sht to put on that evening show
D A C G
When you know I don't need it? Better than your booze and
blow?
Dm A C G
You're like a baby, don't know better You don't know
Dm A C G

You drag me down, you try to keep it on the low

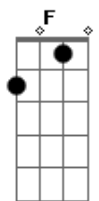
C F Am
But I can't let you in And I can't keep you out.
Bb Dm
I wait for life to end But it never comes around.
F Am
And I can't hear you call And I can't hear me shout.
Bb Dm
I wait for it to break But it never comes around.

Dm A G
Feel like I'm falling apart.
Dm A G
Feel like I'm falling apart.
Dm A G
Feel like I'm falling apart.

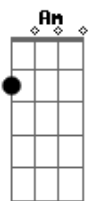
Dm A C
Would you tell me? Would you tell me? Would you tell me?

C F Am
But I can't let you in And I can't keep you out.
Bb Dm
I wait for life to end But it never comes around.
F Am
And I can't hear you call And I can't hear me shout.
Bb Dm
I wait for it to break But it never comes around.
F Bb,
Don't know me
F Bbm F
I'm lonely I'm lonely

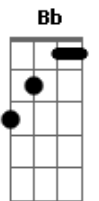
Acordes



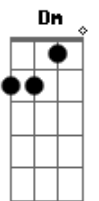
© ukulele-chords.com



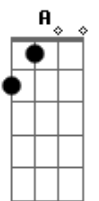
© ukulele-chords.com



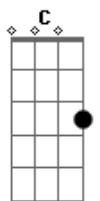
© ukulele-chords.com



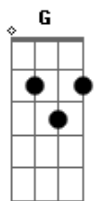
© ukulele-chords.com



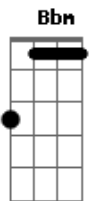
© ukulele-chords.com



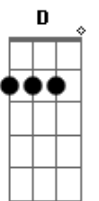
© ukulele-chords.com



© ukulele-chords.com



© ukulele-chords.com



© ukulele-chords.com