

# Linkin Park - Somewhere I Belong

Tom: **D**

Afinação: **Eb Ab Db Gb Bb Eb**  
Introdução ? Parte 1:

Intro: dução ? Parte 2: **B D G E**  
**B D A E**

Primeira Parte:

(When this began)  
I had nothing to say  
And I get lost in the nothingness inside of me

(I was confused)  
And I let it all out to find  
That I'm not the only person  
With these things in mind

(Inside of me)  
But all the vacancy the words revealed  
Is the only real thing  
That I've got left to feel

(Nothing to lose)  
Just stuck, hollow and alone  
And the fault is my own  
And the fault is my own

Primeiro Refrão:

**B D**  
I wanna heal, I wanna feel  
**G E**  
What I thought was never real  
**B D A**  
I wanna let go of the pain I've held so long  
**E**  
(Erase all the pain till it's gone)  
**B D**  
I wanna heal, I wanna feel  
**G E**  
Like I'm close to something real  
**B D A**  
I wanna find something I've wanted all along  
**E**  
Somewhere I belong

Segunda Parte:

And I've got nothing to say  
I can't believe  
I didn't fall right down on my face

(I was confused)

Looking everywhere only to find  
That it's not the way  
I had imagined it all in my mind

(So what am I?)  
What do I have but negativity?  
'Cause I can't justify the way  
Everyone is looking at me

(Nothing to lose)  
Nothing to gain, hollow and alone  
And the fault is my own  
And the fault is my own

Segundo Refrão:

**B D**  
I wanna heal, I wanna feel  
**G E**  
What I thought was never real  
**B D A**  
I wanna let go of the pain I've held so long  
**E**  
(Erase all the pain till it's gone)  
**B D**  
I wanna heal, I wanna feel  
**G E**  
Like I'm close to something real  
**B D A**  
I wanna find something I've wanted all along  
**E**  
Somewhere I belong

Terceira Parte:

**B G**  
I will never know  
**A**  
Myself until I  
**E B**  
Do this on my own  
**G**  
And I will never feel  
**A**  
Anything else  
**E B**  
Until my wounds are healed  
**G**  
I will never be  
**A E B**

Anything 'till I break away from me

I will break away

I'll find myself today

Terceiro Refrão:

I wanna heal, I wanna feel

Like I'm close to something real

I wanna find something I've wanted all along

Somewhere I belong

Final:

I wanna heal, I wanna feel

What I thought was never real

I wanna let go of the pain I've held so long

(Erase all the pain till it's gone)

I wanna heal, I wanna feel

Like I'm somewhere I belong

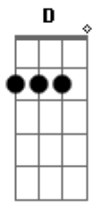
I wanna heal, I wanna feel

Like I'm somewhere I belong

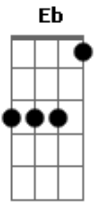
Somewhere I belong

Somewhere I belong

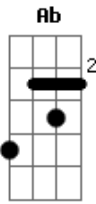
## Acordes



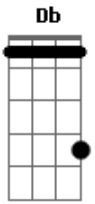
© ukulele-chords.com



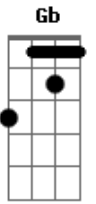
© ukulele-chords.com



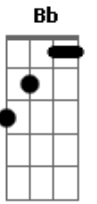
© ukulele-chords.com



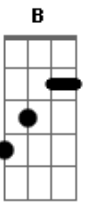
© ukulele-chords.com



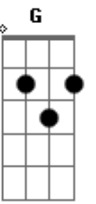
© ukulele-chords.com



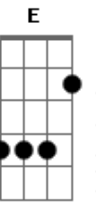
© ukulele-chords.com



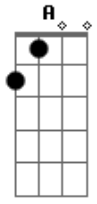
© ukulele-chords.com



© ukulele-chords.com



© ukulele-chords.com



© ukulele-chords.com