

Lyn Lapid - Room For You

tom:

A

[Primeira Parte]

A7M

I've been meaning to call, it's okay if

Gbm7

You hate me

Dbm7

How's it like back at home? Is the lake

Gbm7

Still as pretty?

Bm7

I see that we've been running around

In these peculiar towns, different

D7M

Coastlines

B7

And we've been way too busy, it's cool

It's nice to see we're still fools in

D7M

The same light

[Refrão]

A7M

Bb

Bm7

When the odds of it all get in the way

A7M

Bb

Know I'll be around when you call at

Bm7

The end of the day

Dbm7

Even if the world around it feels like

It's all falling apart

Gbadd9

There'll forever be a room for you

Inside of my heart

Bm7

Eadd9

It's true, there's always room for you

(E7)

[Segunda Parte]

A7M

The time that you ran it was almost

Gbm7

10:30 (PM)

A7M

You just get out of bed, you must've

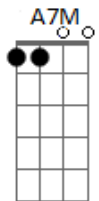
Gbm7

Woken up early

Bm7

Remember that old house down the road

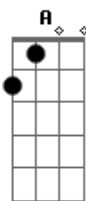
Acordes



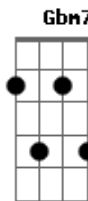
ukulele-chords.com



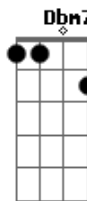
ukulele-chords.com



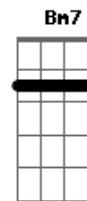
ukulele-chords.com



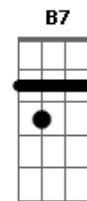
ukulele-chords.com



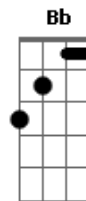
ukulele-chords.com



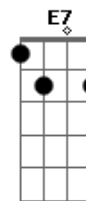
ukulele-chords.com



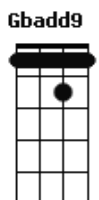
ukulele-chords.com



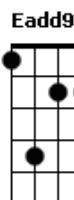
ukulele-chords.com



ukulele-chords.com



ukulele-chords.com



ukulele-chords.com

With the window you broke? Well they

D7M

Tore it down

B7

And though the city started to change

It still remembers your name, like how

D7M

I do now

[Refrão]

A7M

Bb

Bm7

When the odds of it all get in the way

A7M

Bb

Know I'll be around when you call at

Bm7

The end of the day

Dbm7

Even if the world around it feels like

It's all falling apart

Gbadd9

There'll forever be a room for you

Inside of my heart

Bm7

Eadd9

It's true, there's always room for you

(E7 A7M Bb Bm7)

(A7M Bb Bm7)

Dbm7

Gbadd9

Ooh, ooh

Bm7

Ooh it's true, there's always room

Eadd9 E7

For you

[Refrão]

A7M

Bb

Bm7

When the odds of it all get in the way

A7M

Bb

Know I'll be around when you call at

Bm7

The end of the day

Dbm7

Even if the world around it feels like

It's all falling apart

Gbadd9

There'll forever be a room for you

Inside of my heart

Bm7

Eadd9

It's true, there's always room for you

(E7)