

# Matchbox Twenty - If You're Gone

Tom: **A**  
Intro:

FILL 1

FILL 2

I

**A** **Dbm** **D** **Gbm** **E** **D**  
I THINK I ALREADY LOST YOU I THINK YOU'RE ALREADY GONE

**A** **Dbm** **D** **Dbm** **Bm** **Bm**  
**E** I THINK I'M FINALLY SCARED NOW YOU THINK I'M WEAK I THINK YOUR WRONG

**A** **Dbm** **D** **Gbm** **E**  
**D** I THINK YOU'RE ALREADY LEAVIN' FEELS LIKE YOUR HAND IS ON THE DOOR

**A** **Dbm** **D** **Dbm** **Bm** **Bm**  
**E** I THOUGHT THIS PLACE WAS AN EMPIRE NOW I'M RELAXED I CAN'T BE SURE

ADLIB (WITH FILL 2)

**Bm** **E**  
AND I THINK YOU'RE SO MEAN I THINK WE SHOULD TRY

**A** **D** **Bm**  
I THINK I CAN NEED THIS IN MY LIFE AND I THINK I'M SCARED

**E** **G**  
I THINK TOO MUCH I KNOW IT'S WRONG (IT'S/THAT'S) A PROBLEM

I'M FEELIN

CHORUS

**A** **D**  
IF YOU'RE GONE BABY IT'S TIME TO COME HOME

**Bm** **E** **A**  
THERE'S AN AWFUL LOT OF BREATHIN' ROOM BUT I CAN HARDLY MOVE

**A** **D**  
IF YOU'RE GONE BABY YOU NEED TO COME HOME (COME HOME)

**Bm** **E**  
THERE'S A LITTLE BIT OF SOMETHIN' ME AND EVERYTHING IN YOU

II

**A** **Dbm** **D** **Gbm** **E** **D**  
I BET YOU'RE HARD TO GET OVER I BET THE ROOM JUST WON'T SHINE

**A** **Dbm** **D** **Dbm** **Bm** **Bm**  
**E** I BET MY HANDS I CAN STAY HERE AND I BET YOUR ME MORE THAN YOUR MINE

ADLIB (WITH FILL 2)

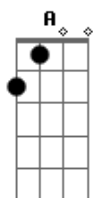
CHORUS

ADLIB (WITH FILL 2)

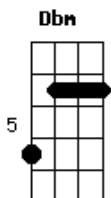
CHORUS

ENDING **G** (**Bm-E**) 3X-**A** (WITH FILL 1)

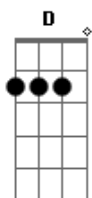
## Acordes



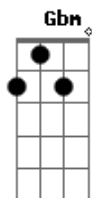
© ukulele-chords.com



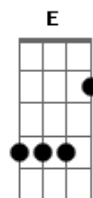
© ukulele-chords.com



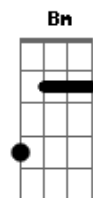
© ukulele-chords.com



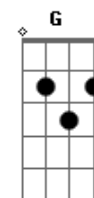
© ukulele-chords.com



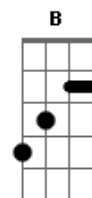
© ukulele-chords.com



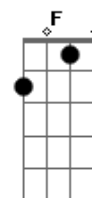
© ukulele-chords.com



© ukulele-chords.com



© ukulele-chords.com



© ukulele-chords.com