

# Millencolin - Greener Grass

Tom: E  
Intro: Gb E Gb E Gb E Gb A E Gb E Gb E Gb E Gb D E 2x

Gb A E  
Gb D Db  
I'm not harmonic  
I can't reach self-esteem  
That's quite ironic  
coz I thought I'd be living my dream  
Gb E Gb E Gb E Gb D E

Gb A E  
Gb D Db  
I don't feel supersonic  
I don't drive in the lane of whipped cream  
I'm more like a chronic  
ignorantly swimming upstream  
Gb E Gb E Gb E Gb D E

Refrão  
D E A Ab Gb  
What can I do to be happy?  
I have problems to decide  
When it looks to me the grass is greener  
On the other side  
Gb E Gb E Gb E Gb A E Gb E Gb E Gb D E 2x

Gb A E  
Gb D Db  
How do I live for the moment  
when I always wanna be else where?  
How do I reach a fulfilment  
Gb E Gb E Gb E Gb D E

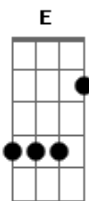
Gb A E  
Gb D Db  
when I'm crashed and got parts to repair?  
Why is my only amusement  
giving other people my despair?  
Why do I give jealous judgement  
on another's affair?  
Gb E Gb E Gb E Gb D E

Refrão

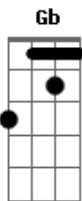
Gb  
Gb A B D  
I wanna get satisfaction just like  
the Stones and Manu Chao  
Gotta ignore all rejection  
I gotta keep trying anyhow  
I wanna be close to the action  
I wanna live my life now  
For this correction I need direction  
gotta find it within myself somehow

D E A Ab Gb  
So maybe one day I'll be happy?!  
But until then I have to realize  
That the grass is not always greener  
It's only up to me to recognize  
D E D E  
That the grass is not always greener  
It's in your head it might look greener  
Coz the grass will never be greener  
On the other side  
Gb E Gb E Gb E Gb A E Gb E Gb E Gb D E

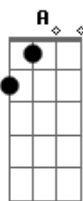
## Acordes



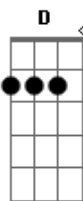
© ukulele-chords.com



© ukulele-chords.com



© ukulele-chords.com



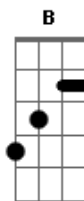
© ukulele-chords.com



© ukulele-chords.com



© ukulele-chords.com



© ukulele-chords.com