

# Mitski - Should've Been Me

tom:

Intro: <sup>F</sup> <sup>D</sup> <sup>F</sup> <sup>D</sup>

[Primeira Parte]

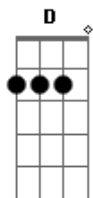
<sup>F</sup>  
Well I went through my list of friends and found  
<sup>D</sup>  
I had no one to tell  
<sup>F</sup>  
Of this overwhelming clean feeling  
<sup>D</sup>  
Strange serenity  
<sup>Am</sup>  
When I saw the girl looked just like me  
<sup>F</sup>  
And it broke my heart, the lengths you went  
<sup>G</sup>  
To hold me  
<sup>Dm</sup>  
To get to have me, 'cause

[Refrão]

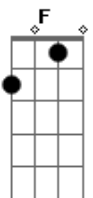
<sup>Am</sup> <sup>E</sup>  
I haven't given you what you need  
<sup>F</sup> <sup>C</sup>  
You wanted me but couldn't reach me  
<sup>Am</sup> <sup>E</sup>  
So you went into your memory-relived  
<sup>F</sup> <sup>C</sup>  
All the ways you still want me  
<sup>Am</sup> <sup>E</sup> <sup>F</sup>  
I haven't given you what you need  
<sup>C</sup> <sup>Am</sup>  
You wanted me but couldn't reach me  
<sup>E</sup> <sup>F</sup> <sup>C</sup>  
I'm sorry it should've been me

( <sup>Bb</sup> <sup>Eb</sup> <sup>D</sup> )

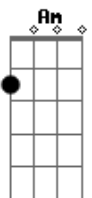
## Acordes



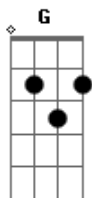
© ukulele-chords.com



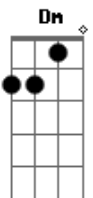
© ukulele-chords.com



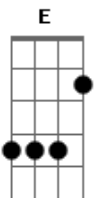
© ukulele-chords.com



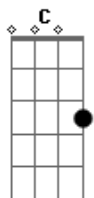
© ukulele-chords.com



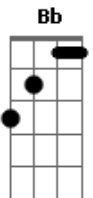
© ukulele-chords.com



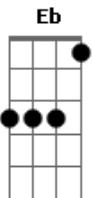
© ukulele-chords.com



© ukulele-chords.com



© ukulele-chords.com



© ukulele-chords.com

[Segunda Parte]

<sup>F</sup>  
I'd be going 'bout my day, until a hand  
<sup>D</sup>  
Would come and lift me out  
<sup>F</sup>  
And drop me in the middle of a labyrinth  
<sup>D</sup>  
Where I'd be stuck a while  
<sup>Am</sup>  
When I saw the girl looked just like me, I thought  
<sup>F</sup>  
Must be lonely loving someone  
<sup>G</sup> <sup>D</sup>  
Trying to find their way out of a maze  
  
Oh I know  
  
( <sup>Am</sup> <sup>E</sup> <sup>F</sup> <sup>C</sup> )  
( <sup>Am</sup> <sup>E</sup> <sup>F</sup> <sup>C</sup> )

[Refrão]

<sup>Am</sup> <sup>E</sup> <sup>F</sup>  
I haven't given you what you need  
<sup>C</sup>  
You wanted me but couldn't reach me  
<sup>Am</sup> <sup>E</sup>  
So you went into your memory-relived  
<sup>F</sup> <sup>C</sup>  
All the ways you still want me  
<sup>Am</sup> <sup>E</sup> <sup>F</sup>  
I haven't given you what you need  
<sup>C</sup> <sup>Am</sup>  
You wanted me but couldn't reach me  
<sup>E</sup> <sup>F</sup> <sup>C</sup>  
I'm sorry it should've been me  
<sup>Am</sup> <sup>E</sup> <sup>F</sup> <sup>C</sup>  
I'm sorry it should've been me

[Final] <sup>C</sup> <sup>F</sup> <sup>Bb</sup> <sup>Eb</sup> <sup>D</sup>