

Mosaic MSC - Different

tom:

Intro: Bb Bb Bb Bb Gm Gm Ebadd9 Ebadd9

[Primeira Parte]

There is a love I've found

How do I explain it?

People will come and go but You're different

You're different

Look what He's done with me

You wouldn't believe it

I used to be dead inside, I'm different

I'm not who I was

All because of how You love me

[Refrão]

Holy, worthy even in my weakness

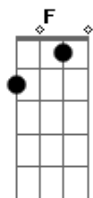
You are faithful, able

Even when I'm lost You've proven

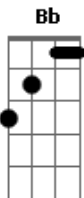
Nothing compares to You

Nothing compares to You

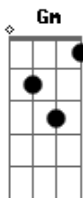
Acordes



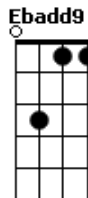
© ukulele-chords.com



© ukulele-chords.com



© ukulele-chords.com



ukulele-chords.com

[Segunda Parte]

I'm different now

You saw me drowning and You pulled me out

I'm different now

My tomb is open and I'm running out

I'm different now

The walls of my heart have come crumbling down

I'm different now

I'm not who I was

All because of how You love me

[Interlúdio] Bb F
Gm Ebadd9

[Ponte]

You took my sin and traded me life

Buried my shame and ended my night

No one who knows me could ever deny

They find me dancing where I used to hide

My chains are broken, my heart is on fire

This is a soul when it's fully alive