

# Mr. Big - The Chain

Tom: A

Intro: Gb7 A E (2X)

Gb7 A E  
 I hear their voices inside my head  
 Gb A E  
 There's no denying it's my private hell as, I lie in bed  
 Gb7 A E  
 I take a look around and see myself  
 D  
 In twenty years will I be them  
 A E Bm D  
 I've taken all I can stand  
 A E Bm D  
 Afraid of what kind of man I am  
 A E Bm D  
 Does everything stay the same  
 A E Gb7 E Gb7 A E  
 Or will I break the chain

Gb7 A E  
 Secrets, emotions, and wounds concealed  
 Gb7 A E  
 Spirits are broken, the deepest scars that I'll never heal  
 Gb7 A E  
 They'll be back handed down from father to son  
 D  
 A closet full of skeletons

A E Bm D  
 I've taken all I can stand  
 A E Bm D  
 Afraid of what kind of man I am  
 A E Bm D  
 Does everything stay the same  
 A E B  
 Or will I break the chain

Dbm  
 I will get by  
 A B B  
 With a little understanding  
 G Gb7 E7  
 'cause it's my own life after all

A E Bm D  
 I've taken all I can stand  
 A E Bm D  
 Afraid of what kind of man I am  
 A E Bm D  
 Does everything stay the same  
 A E Bm D  
 Or will I break the chain

A E Bm D  
 I've taken all I can stand  
 A E Bm D  
 Afraid of what kind of man I am  
 A E Bm D  
 Does everything stay the same  
 A E Bm D  
 Or will I break the chain  
 (Or will I break the chain)

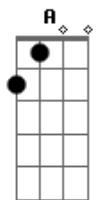
A E Bm D  
 Ah, Ah, Ah, Ah, Ah, Ah

A E Bm D (2x)

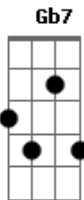
A E Gb7 E  
 Or will I break the chain

Gb7 A E Gb7 E Gb7 A E F#7

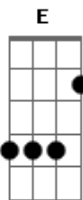
## Acordes



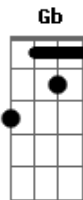
© ukulele-chords.com



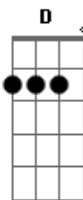
© ukulele-chords.com



© ukulele-chords.com



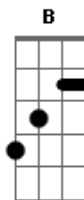
© ukulele-chords.com



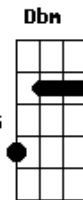
© ukulele-chords.com



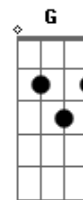
© ukulele-chords.com



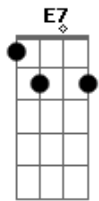
© ukulele-chords.com



ukulele-chords.com



© ukulele-chords.com



© ukulele-chords.com