

# Nirvana - Very Ape

Tom: G

Rhy fig 1  
G A G Bb G A G Bb

Rhy fig 1a  
G A G Bb G A G Bb

The difference between Rhy fig 1 & Rhy fig 1a is that in Rhy fig 1a in the 3rd A you also play the lower strings, or in other words you play an A instead of an A power chord.

Intro: .-  
In the intro you play Rhy fig 1 or 1a several times, (alternate between them, listen to the record so you can know when to play each one) about four, then continue playing it while a second guitar enters playing this:

Fill A

X4

Verse.- w/rhy figs 1 and 1a, and fill A  
I'm buried up to my neck in  
contradiction fly  
I take pride as the king of literature

Fig 2

```

|-----|
|-----|
|-----|
|-----|
|-----|
|-----|
|--5---5---5---5---5---5---5\3---3---3---10---9--
--5---
|--3---3---3---3---3---3---3\1---1---1---8---7--
--3---
|
|
|-----|
|-----12---12---12-12-12-12---12\10---10---10-9---9---7-
-7---7/14---
|
|
|-----|
|-----|
|-----|
|-----|
|-----|

```

w/fig 2  
I'm very ape  
and very nice

Continue playing figures 1 and fill a, then continue with figures 1 but play this instead of fill A, w/verse

Fill b

Verse  
If you ever need anything please don't  
hesitate to ask someone else first

I'm to busy acting like I'm not naive  
w/ fig 2 (without gtr 2)

I've seen it all  
I was here first  
use this for above on gtr 2

Play figures 1 and fill a ?times then play this.-  
Chorus.-  
rhy fig 3 play a semi-harmonic

```

|-----|
|-----13---16---16---16---16/20---20---
|-----|
|---14---14---12---
-11---12---12---
|
|-----|
|-----|
|-----|
|-----|
|-----|
|-----|
|-----|
|-----|
|-----|
|-----5/8---8---8---8---8/12---12---
|-----|
|-----5/8---8---8---8---8/12---12---
|-----|
|---7---X---3/6---6---6---6---6/10---10---5---
-4---5/7---
|-----|
|---5---X---3---
-2---3/5---

```

Chorus.- w/fig 3  
Out of the ground  
into the sky  
out of the sky  
into the dirt

Play figures 1 (adjust them to the end of chorus )

Verse.- w/figures 1  
If you ever need anything please don't  
hesitate to ask someone else first  
I'm to busy acting like I'm not naive  
w/ fig 2 (without gtr 2)  
I've seen it all  
I was here first

Play figures 1 w/fill b

Chorus.- w/fig 3  
Out of the ground  
into the sky  
out of the sky  
into the ground  
out of the ground  
into the sky  
out of the sky  
into the dirt  
It ends with this.-

```

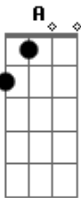
|-----|
|-----|
|-----|
|-----7---7---
|-----5---5---
|-----|
|-----|
|-----14\---
|-----|
|-----|
|-----|

```

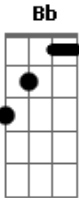
# Acordes



© ukulele-chords.com



© ukulele-chords.com



© ukulele-chords.com