

Owl City - My Everything

Tom: F

Intro: Bb F Dm C Bb Gm Dm C

Gm Dm C Bb F C Bb

When my hope is lost and my strength is gone, I run to you and you alone

Dm C Bb F C Bb Gm

When I can't get up and I can't go on, I run to you and you alone

Bb C

Cause you're my light in the dark

Bb C

And I sing with all of my heart

Bb F C Dm

Hallelujah, my almighty God divine

Bb F C Dm

Hallelujah, I am yours and you are mine

Bb F C Dm

This is all I know how to say

Bb Gm Dm C

Hallelujah, Hallelujah

Bb F C Bb Gm Dm C

You're my everything

Gm Dm C Bb F C Bb

When I'm plagued with pain and filled with fear I run to you and you alone

Bb F C Bb Gm

Dm C

When my days are few and death is near I run to you and you alone

Bb C

Cause you're my light in the dark

Bb C

And I sing with all of my heart

Bb F C Dm

Hallelujah, my almighty God divine

Bb F C Dm

Hallelujah, I am yours and you are mine

Bb F C Dm

This is all I know how to say

Bb Gm Dm C

Hallelujah, Hallelujah

Bb F C Dm

This is all I know how to say

Bb Gm Dm C

Hallelujah, Hallelujah

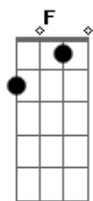
Bb F C Bb Gm

You're my everything

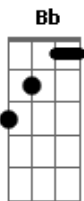
Dm C

You're my everything

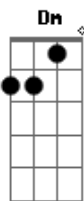
Acordes



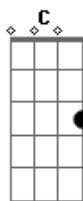
© ukulele-chords.com



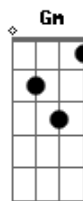
© ukulele-chords.com



© ukulele-chords.com



© ukulele-chords.com



© ukulele-chords.com