

Pablo - Quero Ser

Tom: C

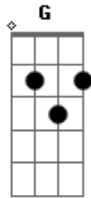
C
 quero ser irresistivel ao teu altar
F C Dm G
 quero ser irresistivel senhor
Bb C G Am
 leva-me ao santo lugar

Dm G
 onde eu possa te adorar
Bb C G Am
 leva-me senhor ao santo lugar
C D E>>F>>G D Em
 onde eu possa te adorar com todo meu louvor e adoracao
C Am D Bm Am Am G C...
 leva-me senhor

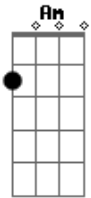
Acordes



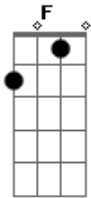
© ukulele-chords.com



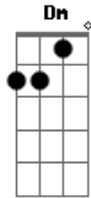
© ukulele-chords.com



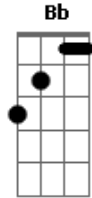
© ukulele-chords.com



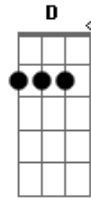
© ukulele-chords.com



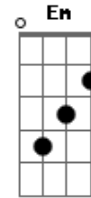
© ukulele-chords.com



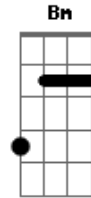
© ukulele-chords.com



© ukulele-chords.com



© ukulele-chords.com



© ukulele-chords.com