

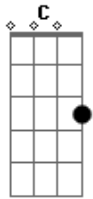
Pato Fu - Aerosmiths

Tom: **C**

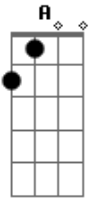
A
A
Well I give up understanding
It's against my will
Time's pushing me away from the pop
'Cause I feel like a robber
And I look like a cop
Boogie woogie mother fucker
This here music can't stop

A **Ab** **G** **Ab** **A**
In my life I try and I try
E
It's time to make my mind
A
Live or die
What I'm asking you
At the end of my pray
God give me just to be friendly
Been trying to calculate my fate
Been trying to meet you -Solo: (**Dm** **C** **Bb** **A**)

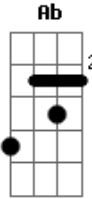
Acordes



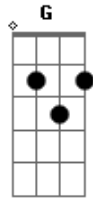
© ukulele-chords.com



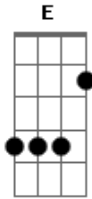
© ukulele-chords.com



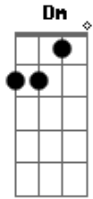
© ukulele-chords.com



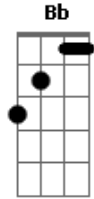
© ukulele-chords.com



© ukulele-chords.com



© ukulele-chords.com



© ukulele-chords.com