

Pierce The Veil - Shared Trauma

tom:

F

Am I still your excuse to go get high?

F Bb Dm C

Flatlined, coma induced in record time

F Bb Dm C

If I go down in flames, then what's the point of even trying?

Bb Dm

'Cause we share trauma, and as we share trauma

C C

It takes it to break it, woah

Bb Dm C

We share trauma and nothing's ever gonna erase it

C

So face it

F Bb Dm C

To you (to you), i'm drawn across this universe

F Bb Dm C

For you(for you), i'm tempted from my dreams and curse

Am Bb Dm C

In a state of emergency, and I'm afraid it's getting worse

Bb Dm

'Cause we share trauma, and as we share trauma

C C

It takes it to break it, woah

Bb Dm C

We share trauma and nothing's ever gonna erase it

C

So face it

(F Dm Bb F)

F Dm

I'm running on empty

Bb F

Will you armor me for battle? I'm afraid

F Dm

That all my veins and never-ending tragedies

Bb F

Will bleed my heart empty and scare your love away

Bb Dm

'Cause we share trauma, and as we share trauma

C C

It takes it to break it, woah

Bb Dm C

We share trauma and nothing's ever gonna erase it

C

So face it

Oh

(Bb Dm C)

Bb Dm C

We share this

Bb Dm C

We share this

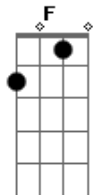
Bb Dm C

We share this

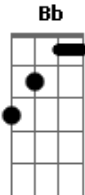
Bb Dm C

We share this

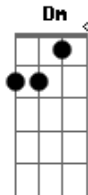
Acordes



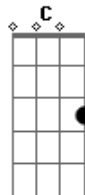
© ukulele-chords.com



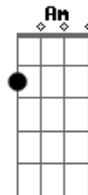
© ukulele-chords.com



© ukulele-chords.com



© ukulele-chords.com



© ukulele-chords.com