

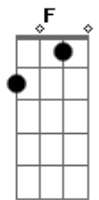
Pink Floyd - The Post War Dream

Tom: **F**
Intro: **Bb C F Bb F Bb C Bb F**

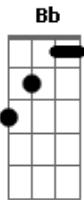
Bb F
Tell me true, tell me why was Jesus crucified?
C C7 F
Is it for this that daddy died?
Bb F
Was it you? Was it me?
Bb
Did I watch too much T.V.?
C
Is that a hint of accusation in your eyes?
F
If it wasn't for the Nips
F7 Bb
Being so good at building ships,
C C F
The yards would still be open on the Clyde.

F7
And it can't be much fun for them
Bb
Beneath the rising sun
C C7 F
With all their kids committing suicide.
Bb F
What have we done, Maggie what have we done?
Bb
What have we done to England?
C F A
Should we shout, should we scream,
Bb Bbm F Dm7
"What happened to the post war dream?"
Gm7 C7
Oh, Maggie,
C7 F C Bb F
Maggie what have we done?

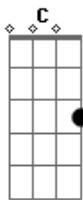
Acordes



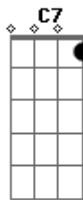
© ukulele-chords.com



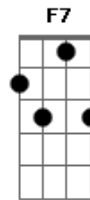
© ukulele-chords.com



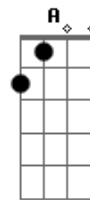
© ukulele-chords.com



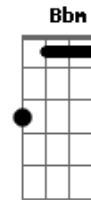
© ukulele-chords.com



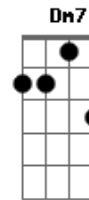
© ukulele-chords.com



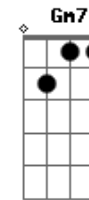
© ukulele-chords.com



© ukulele-chords.com



© ukulele-chords.com



© ukulele-chords.com