

Plush - Hate

tom:

Intro: Cm F Cm Ab F

Cm
I am so broken

My wounds are open

For the world to see

That I am unclean

Ab
I'm dirty

Cm
I'm unworthy

Ab
Turning

Fm
Fire's burning

Cm Ab
I hate that you hurt me

Eb
I'll take what you've done

G
I hate that you're happy

Cm
I thought you were the one

Ab
I hate that I still want you

Eb
And miss your smile

G
I hate everything about you

C Cm
I hate myself for hanging on

(C F C Cm Ab F)

Cm
My eyes are distorted

From the lies that you've spoken

I scream but I feel

Nothing is unreal

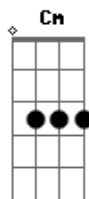
Ab
Dirty

Cm
I'm unworthy

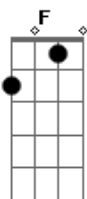
Ab
Turning

Fm

Acordes



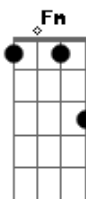
© ukulele-chords.com



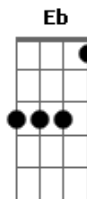
© ukulele-chords.com



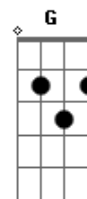
© ukulele-chords.com



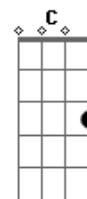
© ukulele-chords.com



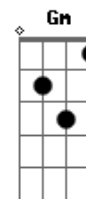
© ukulele-chords.com



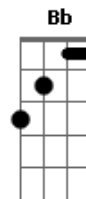
© ukulele-chords.com



© ukulele-chords.com



© ukulele-chords.com



© ukulele-chords.com

Fire's burning

Cm Ab
I hate that you hurt me

Eb
I'll take what you've done

G
I hate that you're happy

Cm
I thought you were the one

Ab
I hate that I still want you

Eb
And miss your smile

Gm G
I hate everything about you

Gm Ab Fm
I hate myself for hanging on

Cm
Breathing's not a part of healing

F
It doesn't mean that I'm alive inside

Cm
Just because my heart's still beating

Ab Fm Ab Fm
It doesn't mean that I don't wanna die slow

[Solo] Cm C F Cm Ab Bb Cm

Cm Ab
I hate that you hurt me

Eb
I'll take what you've done

Gm
I hate that you're happy

G Cm
I thought you were the one

Ab
I hate that I still want you

Eb
And miss your smile

G
I hate everything about you

Cm
I hate myself for hanging on

Cm Ab
I hate that you hurt me

Eb
I'll take what you've done

G
I hate everything about you

Cm C
I hate myself for hanging on

F Cm
I hate myself for hanging on

[Final] Ab F