

Post Malone - What Don't Belong To Me

tom:
 Db (forma dos acordes no tom de Bb)
 Capotraste na 3ª casa
 Intro: C G

[Primeira Parte]

C
 I can wrap a rope around the Moon
 Tie it up and drag it down to you G
 G
 Honey, if you asked me to
 You know I'd try it
 C
 I could put some diamonds 'round your neck
 Dancin' in a room with red sunset G
 G
 Girl, if you don't wanna lay in this jet
 Let's keep on flyin'

[Pré-Refrão]

C G
 Every string, every chord
 Em C G
 My guitar, I give you everything in the world
 But my heart

[Refrão]

C
 'Cause I gave half to them halfway lovers
 C
 I left some to them too-drunk summers
 G
 Left a piece in the bar with the keys to my car
 G
 I know I'm never gettin' it back
 C
 I lost a lot to that whiskey sippin'
 C
 I gave the rest to that rockstar livin'
 G
 Take all of me, but there's one thing missin'
 C
 Baby, I can't give you what don't belong to me

[Post-Refrão]

C
 (What don't belong to me)
 (What don't belong to me) What don't belong to me G
 G
 (What don't belong to me)
 G
 (What don't belong to me)

[Segunda Parte]

C
 I could lay you down, I could change your life
 C
 Maybe not forever, no, but baby, for tonight
 G
 If I knew I need you one day
 G
 I wouldn't never gave it all away

[Pre-chorus]

C
 And I wish I could give you the best
 G

'Cause you deserve much more than this hole in my chest

[Refrão]

C
 'Cause I gave half to them halfway lovers
 C
 I left some to them too-drunk summers
 G
 Left a piece in the bar with the keys to my car
 G
 I know I'm never gettin' it back
 C
 I lost a lot to that whiskey sippin'
 C
 I gave the rest to that rockstar livin'
 G
 Take all of me, but there's one thing missin'
 C
 Baby, I can't give you what don't belong to me

[Pos-Refrão]

C
 (What don't belong to me)
 C G
 (What don't belong to me) What don't belong to me
 G
 (What don't belong to me)
 G
 (What don't belong to me)

[Ponte]

Em
 Yeah, you keep holdin' on, but it's gone when it's gone
 Bm
 And you can't replace it
 G
 Baby, let's just face it
 G
 Baby, let's just face it

[Refrão]

C
 'Cause I gave half to them halfway lovers
 C
 I left some to them too-drunk summers
 G
 Left a piece in the bar with the keys to my car
 G
 I know I'm never gettin' it back
 C
 I lost a lot to that whiskey sippin'
 C
 I gave the rest to that rockstar livin'
 G
 Take all of me, but there's one thing missin'
 C
 Baby, I can't give you what don't belong to me

[Pos-Refrão]

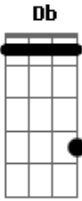
C
 (What don't belong to me)
 C
 (What don't belong to me) No, what don't belong to me
 G
 (What don't belong to me)
 (What don't belong to me) Yeah, what don't belong to me C
 C
 (What don't belong to me)
 G
 (What don't belong to me) What don't belong to me
 G
 (What don't belong to me)
 G

(What don't belong to me)

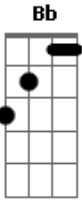
[Final]

What don't belong to me^C

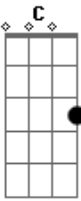
Acordes



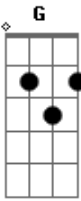
© ukulele-chords.com



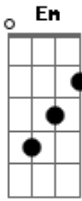
© ukulele-chords.com



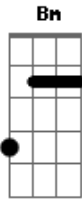
© ukulele-chords.com



© ukulele-chords.com



© ukulele-chords.com



© ukulele-chords.com