

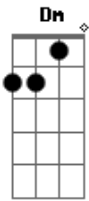
# Rebecca Parris - No One Ever Tells You

Tom: A  
Intro: Dm Dm Bm Fdim E7

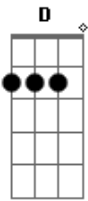
A Gm A  
Gm  
No one ever tells you what's like to love and lose  
A Gm A  
Gdim  
How it feels to waken and have breakfast with the blues  
D Dm A Dbm Gb7  
How to go on living, how to face another day  
D Dm Fdim E7  
No one ever tells you the way  
A Gm A  
No one ever tells you how it feels to walk alone  
A Gm  
Gdim  
Listening for those footsteps through the echo of your own  
D Dm A  
Gb7  
Suddenly it hits you all those dreams weren't worth a dime  
D Dm Bb E7 A  
'Cause no one ever tells you in time  
Bridge  
Gm Gdim D D D  
Long before the icy winds of winter  
Dm Fdim A7 A7 D

Autumn tells the swallows, "Time to fly"  
Gm A Gm A  
Why did she pretend, till the bitter end  
Dm Dm Bm Fdim E7  
Till it broke my heart to say, "Goodbye"  
A Gm A  
Gm  
And no one ever tells you that it's just another fling  
A Gm A  
Gdim  
No one ever warns you when your heart begins to sing  
D Dm A Dbm Gb7  
Someone tells you later all is fair in love and war  
Gm D Dm Bb E7 A  
But no one ever tells you before  
A A Gm A  
Gm  
No one ever tells you what's like to love and lose  
Dm A Gm A  
Gdim  
How it feels to waken and have breakfast with the blues  
D Dm A Dbm Gb7  
How to go on living, how to face another day  
Dbm Gb7  
It never comes easy  
D Dm E7 A  
No one ever tells you before

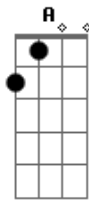
## Acordes



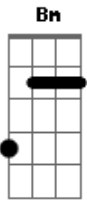
© ukulele-chords.com



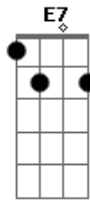
© ukulele-chords.com



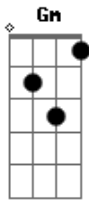
© ukulele-chords.com



© ukulele-chords.com



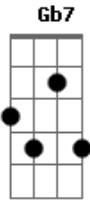
© ukulele-chords.com



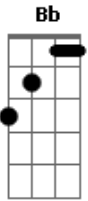
© ukulele-chords.com



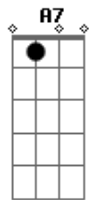
© ukulele-chords.com



© ukulele-chords.com



© ukulele-chords.com



© ukulele-chords.com