

# Rei Ribeiro - Deus Emanuel

tom:

**Db** (forma dos acordes no tom de **Bb** )

Capostrate na 3ª casa

**Bb** **F** **Gm** **Eb** **Bb** **Cm**

Deus Emanuel, Deus Emanuel

**Bb** **F** **Gm** **Eb** **Bb** **Cm**

Deus Emanuel, Deus Emanuel

**Bb** **F** **Gm**

Onde estiverem dois ou três

**Eb** **Bb** **Cm**

Ali eu estarei

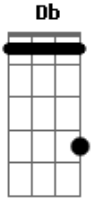
**Eb** **F7** **Bb**

Se concordarem em tudo

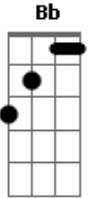
**Cm** **F7**

Eu responderei

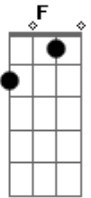
## Acordes



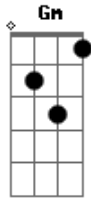
© ukulele-chords.com



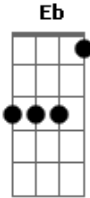
© ukulele-chords.com



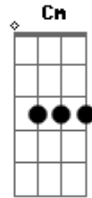
© ukulele-chords.com



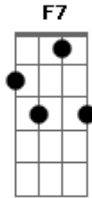
© ukulele-chords.com



© ukulele-chords.com



© ukulele-chords.com



© ukulele-chords.com