

# Robin Gibb - Most Of My Life

Tom: G

Intro: C G Am Am F Dm G

C G Am Am F Dm G G G  
Most of my life, I've had to run away  
C G Am Am F Dm G G G  
Life was a game and I just had to play  
C C7 Bb Am F Dm  
The friends that I thought I had were never there  
Em Am F G  
You look for love, but you don't know where

C G Am Am F Dm G G G  
And I'm in a race that could be any place  
C G Am Am F Dm G G G  
And when I was born, my life had slowly worn  
C C7 Bb Am F Dm  
The woman that I loved had slowly walked away  
Em Am F G  
I tried to smile but that was yesterday

C G Am Am F Dm G G G  
And most of my life, I've had to run away  
C G Am Am F Dm G G G  
Life was a game and I just had to play  
C C7 Bb Am F Dm  
The friends that I thought I had were never there

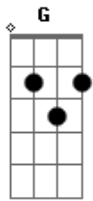
Em Am F G  
You look for love, but you don't know where

C G Am Am F Dm G G G  
And most of my life, I've had to run away  
C G Am Am F Dm G G G  
Life was a game and I just had to play  
C C7 Bb Am F Dm  
The woman that I loved had sadly walked away  
Em Am F G  
I tried to smile but that was yesterday

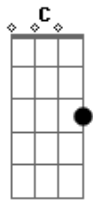
C G Am Am F Dm G G G  
And most of my life, I've had to run away  
C G Am Am F Dm G G G  
Life was a game and I just had to play  
C C7 Bb Am F Dm  
The friends that I thought I had were never there  
Em Am F G  
You look for love, but you don't know where

C G Am Am F Dm G G G  
Most of my life and most of my life  
C G Am Am F Dm G G G  
And most of my life, and most of my life  
C G Am Am F Dm G  
And most of my life

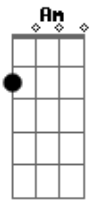
## Acordes



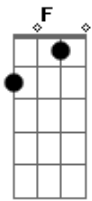
© ukulele-chords.com



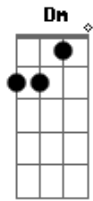
© ukulele-chords.com



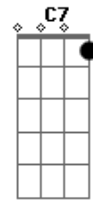
© ukulele-chords.com



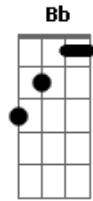
© ukulele-chords.com



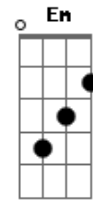
© ukulele-chords.com



© ukulele-chords.com



© ukulele-chords.com



© ukulele-chords.com